

# **ConfigTool User's Manual (Windows Version)**

**V1.0.1**

## Important Safeguards and Warnings

Please read the following safeguards and warnings carefully before using the product in order to avoid damages and losses.

Note:

- Do not expose the device to lampblack, steam or dust. Otherwise it may cause fire or electric shock.
- Do not install the device at position exposed to sunlight or in high temperature. Temperature rise in device may cause fire.
- Do not expose the device to humid environment. Otherwise it may cause fire.
- The device must be installed on solid and flat surface in order to guarantee safety under load and earthquake. Otherwise, it may cause device to fall off or turnover.
- Do not place the device on carpet or quilt.
- Do not block air vent of the device or ventilation around the device. Otherwise, temperature in device will rise and may cause fire.
- Do not place any object on the device.
- Do not disassemble the device without professional instruction.

Warning:

- Please use battery properly to avoid fire, explosion and other dangers.
- Please replace used battery with battery of the same type.
- Do not use power line other than the one specified. Please use it properly. Otherwise, it may cause fire or electric shock.

## Special Announcement

- This manual is for reference only.
- All the designs and software here are subject to change without prior written notice.
- All trademarks and registered trademarks are the properties of their respective owners.
- If there is any uncertainty or controversy, please refer to the final explanation of us.
- Please visit our website for more information.

# Table of Contents

1	Product Overview .....	- 1 -
2	Installation and Uninstallation .....	- 2 -
2.1	Install .....	- 2 -
2.2	Uninstall.....	- 4 -
3	Daily Operation .....	- 5 -
3.1	Login.....	- 5 -
3.2	Configure System Setting .....	- 7 -
3.3	Add Device .....	- 7 -
3.3.1	Add Single Device .....	- 8 -
3.3.2	Batch Add .....	- 8 -
3.4	Modify IP .....	- 12 -
3.4.1	Modify One IP.....	- 12 -
3.4.2	Batch Modify IP .....	- 13 -
3.5	Configure Device Parameter.....	- 14 -
3.5.1	Set Encoding Parameter .....	- 14 -
3.5.2	Set Video Parameter .....	- 16 -
3.6	Configure System Info .....	- 20 -
3.6.1	Time Sync.....	- 21 -
3.6.2	Reboot .....	- 22 -
3.6.3	Default .....	- 23 -
3.6.4	Set Password .....	- 24 -
3.7	Upgrade Device .....	- 25 -
3.7.1	Single Upgrade.....	- 25 -
3.7.2	Batch Upgrade .....	- 26 -
3.8	Configure Template .....	- 28 -
3.8.1	Create Template.....	- 28 -
3.8.2	Template Application .....	- 34 -
3.9	Package Center .....	- 36 -
3.9.1	Load Program.....	- 37 -
3.9.2	Uninstall Program.....	- 38 -

# 1 Product Overview


ConfigTool is a system tool with the following functions:

- Modify device IP.
- Set device code parameter or video parameter.
- Sync device time, reboot device, restore system default and modify device password.
- Upgrade device.
- Application center, including ARCCConfig, ACSConfig, VDPCConfig, BatchConfig, LensSelector and etc.

## 2 Installation and Uninstallation

You can refer to these steps to install or uninstall ConfigTool.

### 2.1 Install

Step 1. Double click . System pops up language box.

Step 2. Select language, click OK. System pops up installation interface as in Figure 2-1.

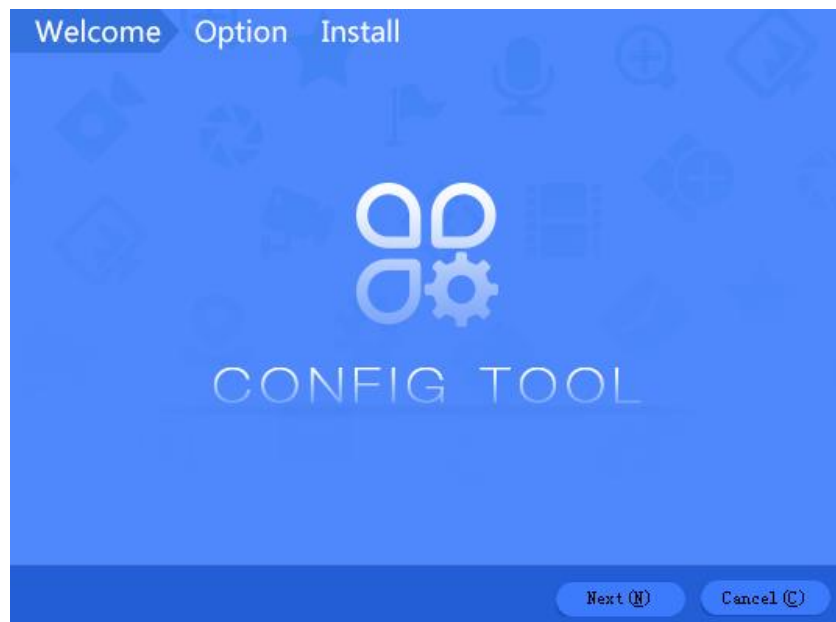


Figure 2-1

Step 3. Click Next. System shows Please select a install directory box as in Figure 2-2.

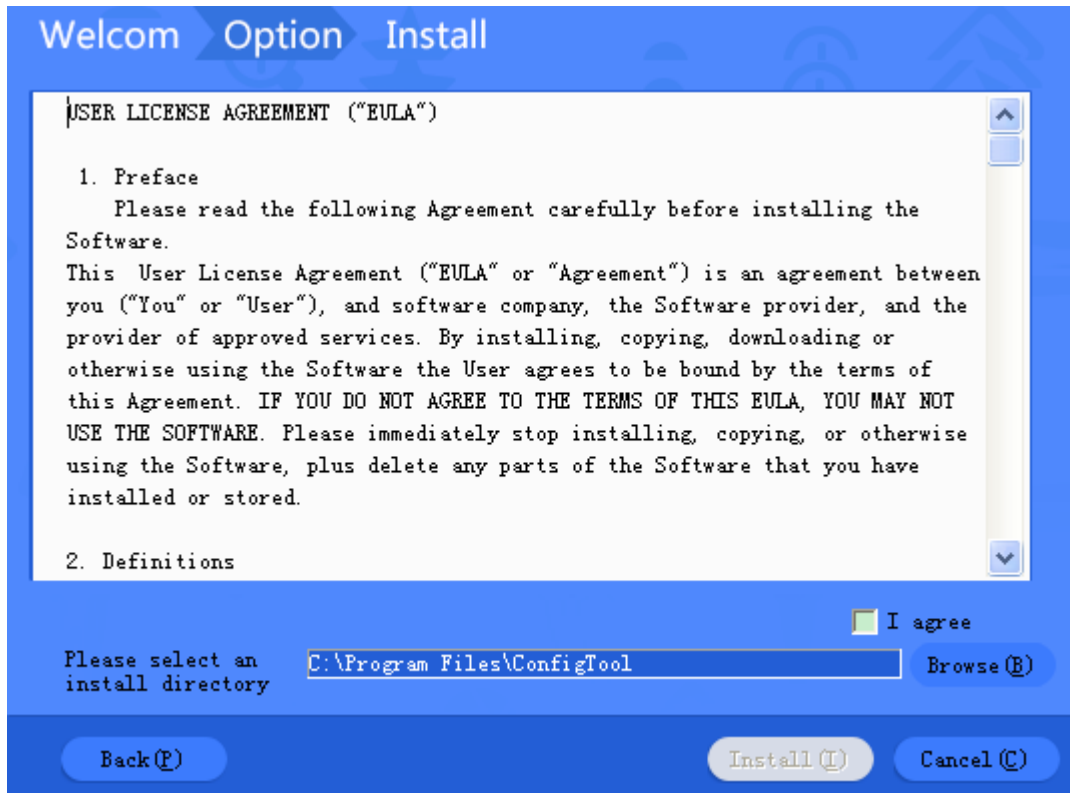


Figure 2-2

Step 4. Check I agree box, and click Browse to choose a directory.

Step 5. Click Install. Install ConfigTool, and after it finishes, the system shows Figure 2-3.

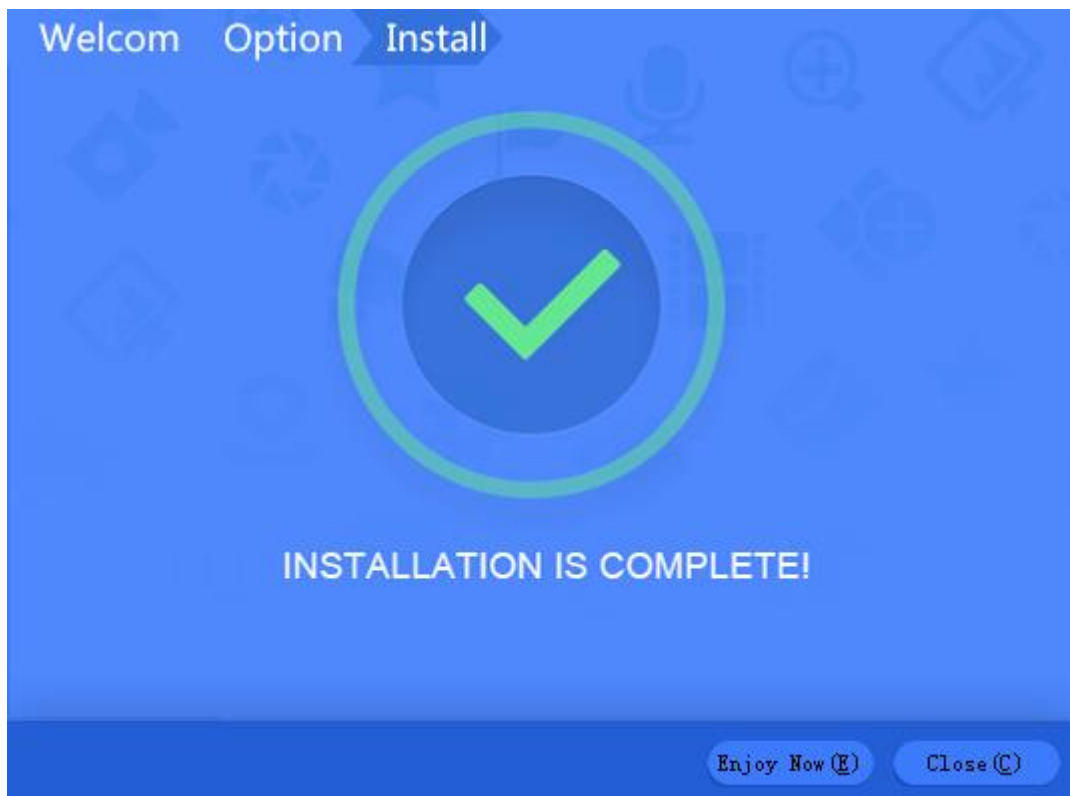


Figure 2-3

Step 6. Click Close.

## 2.2 Uninstall

Step 1. On PC, select Start>All Programs>ConfigTool>Uninstall ConfigTool. See Figure 2-4.



Figure 2-4

Step 2. Click Uninstall, so the system starts to uninstall. When uninstallation is complete, you can see Figure 2-5.

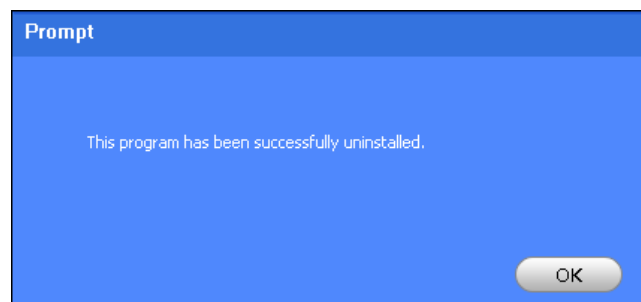


Figure 2-5

Step 3. Click OK. Process completed.

### 3 Daily Operation

#### 3.1 Login



After installation completes, double click  system pops up the software interface as in Figure 3-1.

Note:

After ConfigTool is enabled, it will auto search device according to Search setting. For the first time of operation, “Current Segment Search” is checked by default.

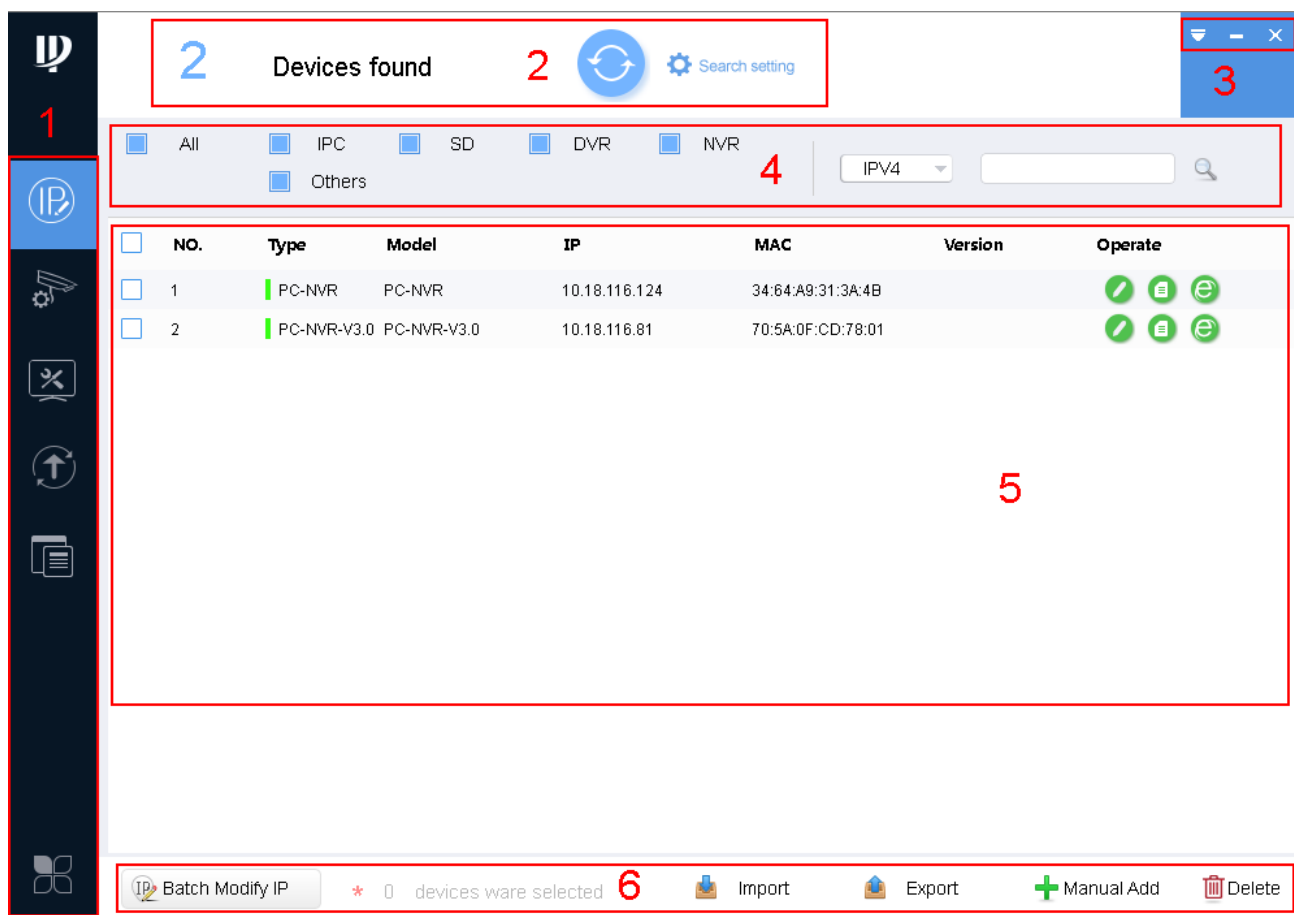



Figure 3-1

No.	Function	Description
1	Menu	It includes the following six tabs:  : one by one or batch modify device IP.















		 : modify encode config and video config.  : set system time, auto reboot or manually reboot, and restore default settings.  : upgrade device one by one or as batch.  : manage template and apply template. Template information include encode config info and video config info. Management template allows to maintain template config info. Apply template is to modify device data by importing template.  : You can embed more applications here.
2	Search Setting	<p>Search for device by IP.</p> <p>Click  to refresh device list.</p>
3	Help	<p>You can view help document and software version, set system settings, minimize or exit software.</p> <ul style="list-style-type: none"> <li>● Click , view help document and software info, set search device spare port and upgrade.</li> <li>● Click  to minimize software.</li> <li>● Click  to exit.</li> </ul>
4	Filter	Quickly filter device (by type, IP, model, MAC address, version)
5	Device List	<p>It shows searched device and device info, including type, model, IP, MAC and version. In Operation list, click  to view device details. Click  to quickly open device WEB config interface. Click  to modify device IP.</p>
6	Function Config	<p>You can batch modify device IP, import device, export device or delete device.</p> <ul style="list-style-type: none"> <li>● Select device, click Batch Modify IP, so you can change IP of multiple devices.</li> <li>● Click Import, to batch import device.</li> <li>● Select device, click Export to export selected devices.</li> <li>● Select device, click Delete to delete device.</li> </ul>

Chart 3-1

### 3.2 Configure System Setting

Set spare port of device search, and upgrade timeout and network timeout.

Step 1. In homepage select  >Setting. See Figure 3-2.

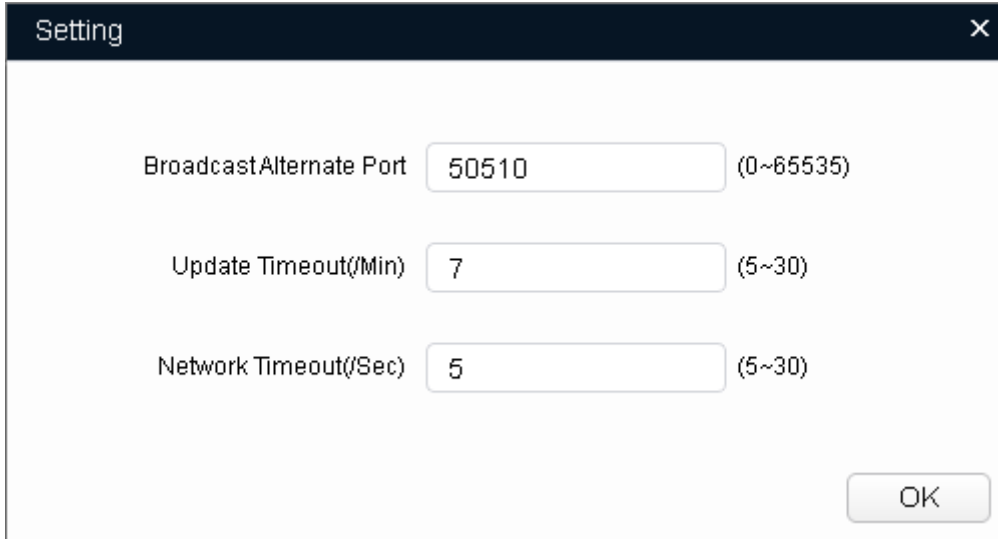


Figure 3-2

Step 2. Set system setting, see Chart 3-2.

Parameter	Note
Broadcast Alternate Port	Alternate port used to search device. When default broadcast port cannot find device, tool will auto switch this port for device search.
Update Timeout	When device is updating, max update time of a single device. When device updating time exceeds this value, the system stops device updating.
Network Timeout	When device is updating, max network time. When device network time exceeds this value, the system stops device updating.

Chart 3-2

Step 3. Click OK.

### 3.3 Add Device

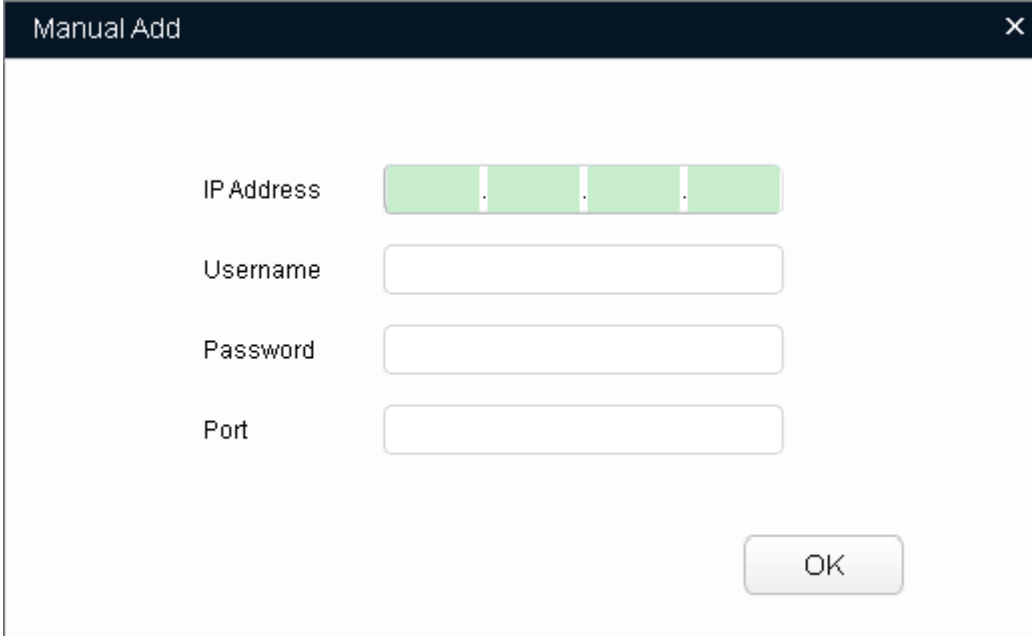
**Warning:**

Please make sure the network is well connected between device and PC where ConfigTool is installed, otherwise device will not be searched by ConfigTool.

### 3.3.1 Add Single Device

Step 1. Click .

Step 2. Click Manual Add, see Figure 3-3.



The image shows a dialog box titled "Manual Add" with a close button (X) in the top right corner. It contains four input fields: "IP Address" (a green field with three vertical dividers), "Username", "Password", and "Port". An "OK" button is located at the bottom right of the dialog.

Figure 3-3

Step 3. Set device parameter, see Chart 3-3.

Parameter	Note
IP Address	Add device IP address
Username	Login device username and password
Password	
Port	Device port no.

Chart 3-3

Step 4. Click OK.

Note:

You can set search criteria to quickly filter device.

### 3.3.2 Batch Add

Batch add device by search or template import, please select the appropriate method accordingly.

- If you there are devices in the segment, you can add device by search, see Ch 3.2.2.1.
- If you have device template data, you can import device via template, see Ch 3.2.2.1.

### 3.3.2.1 Search to Add

Step 1. In ConfigTool homepage, click  Search setting . System pops up Setting box. See Figure 3-4.

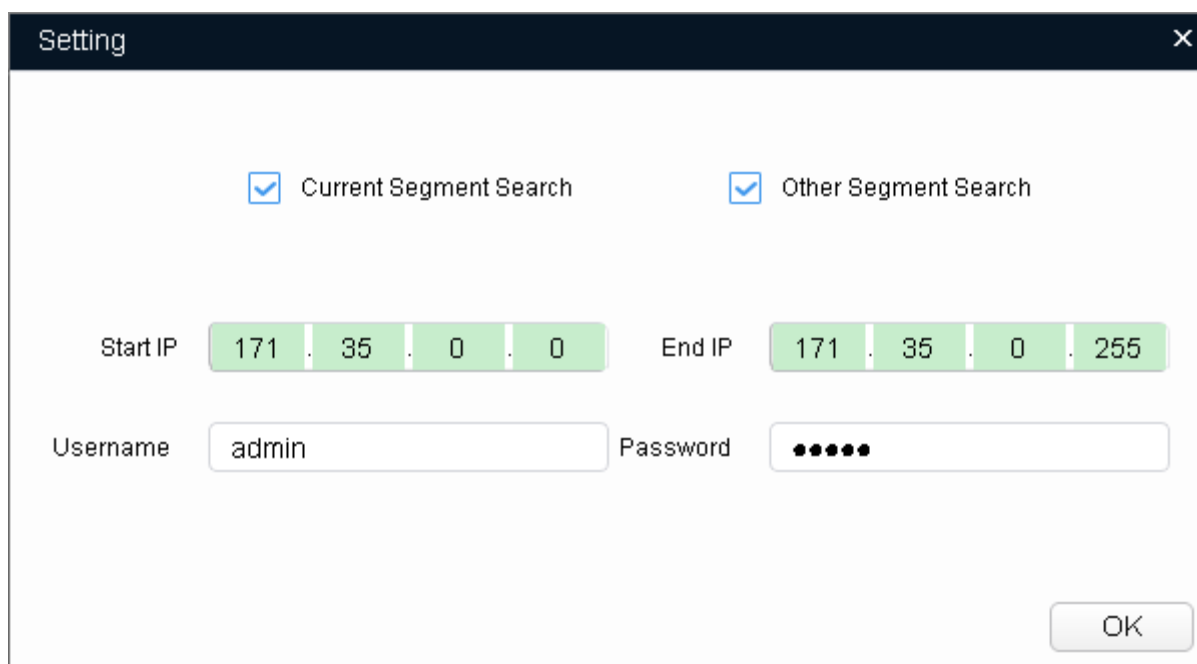


Figure 3-4


Step 2. Set criteria of search, see Chart 3-4.

Parameter	Explanation	Note
Current Segment Search	Current segment, which is IP segment after of PC where ConfigTool is installed. Check current segment search, then it will only search device in current segment.  For first time use, auto search uses default criteria.	If when you set criteria and check current segment search AND other segment search, then it will search device in both segments.
Other Segment Search	Check other segment search, set start IP and end IP, so it searches only device in this set segment.	
Start IP		
End IP		
Username	When you modify IP, configure device parameter, configure system parameter and upgrade device, searched username and password at login.	-
Password		

Chart 3-4

Step 3. Click OK. In device list, it shows searched device.

Note:

- Click , search device again, and update device list info.
- Under Filter tab, you can filter device, and quickly search for device in the results. Under All tab, you will see all searched devices.
- When you close this software, it will save search criteria, so you see these saves criteria when you open ConfigTool for the next time.

### 3.3.2.2 Add by Template

Add device by template, to quickly add designated device into the system.

#### 3.3.2.2.1 Get Template

Manually fill in template file or export device file info from system as template.

- Fill in template file.
- Export device info.

#### Background

- Template file (.xls) must be opened and edited by Excel.
- When you delete record in template, you must select corresponding rows, and right click Delete to delete record.

#### Fill in Template File

Step 1. In directory of tool, open template file.

Step 2. Fill in device parameter, see Chart 3-5.

Parameter	Note
Type	Mandatory, device type, such as IPC, NVR and etc.
Model	Optional, device model
IP	Mandatory, device IP address
Port	Mandatory, device port
MAC	Mandatory, device MAC address, please get from device label.
SN	Optional, device SN
Version	Optional, device version
Subnet Mask	Optional, device subnet mask
Gateway	Optional, device gateway

Chart 3-5

Step 3. Save and close template file.

### Export Device Info

Export searched device info, and used to add device or back up device info.

Step 1. Click .

Step 2. Select device to export, click Export.

Step 3. Select storage path, set device name and click Save.

System starts to export device. When device export is complete, in pop-up box click OK. N

You can view exported device info under storage path.

### 3.3.2.2.2 Import Device

After template is gotten, add device into system by importing.

**Warning:**

**Do not use the template that you are importing!**

Step 1. Click .

Step 2. Click Import.

Step 3. Select device file you want to import, click Open.

System starts to import device. See Figure 3-5. In pop-up box, click OK.

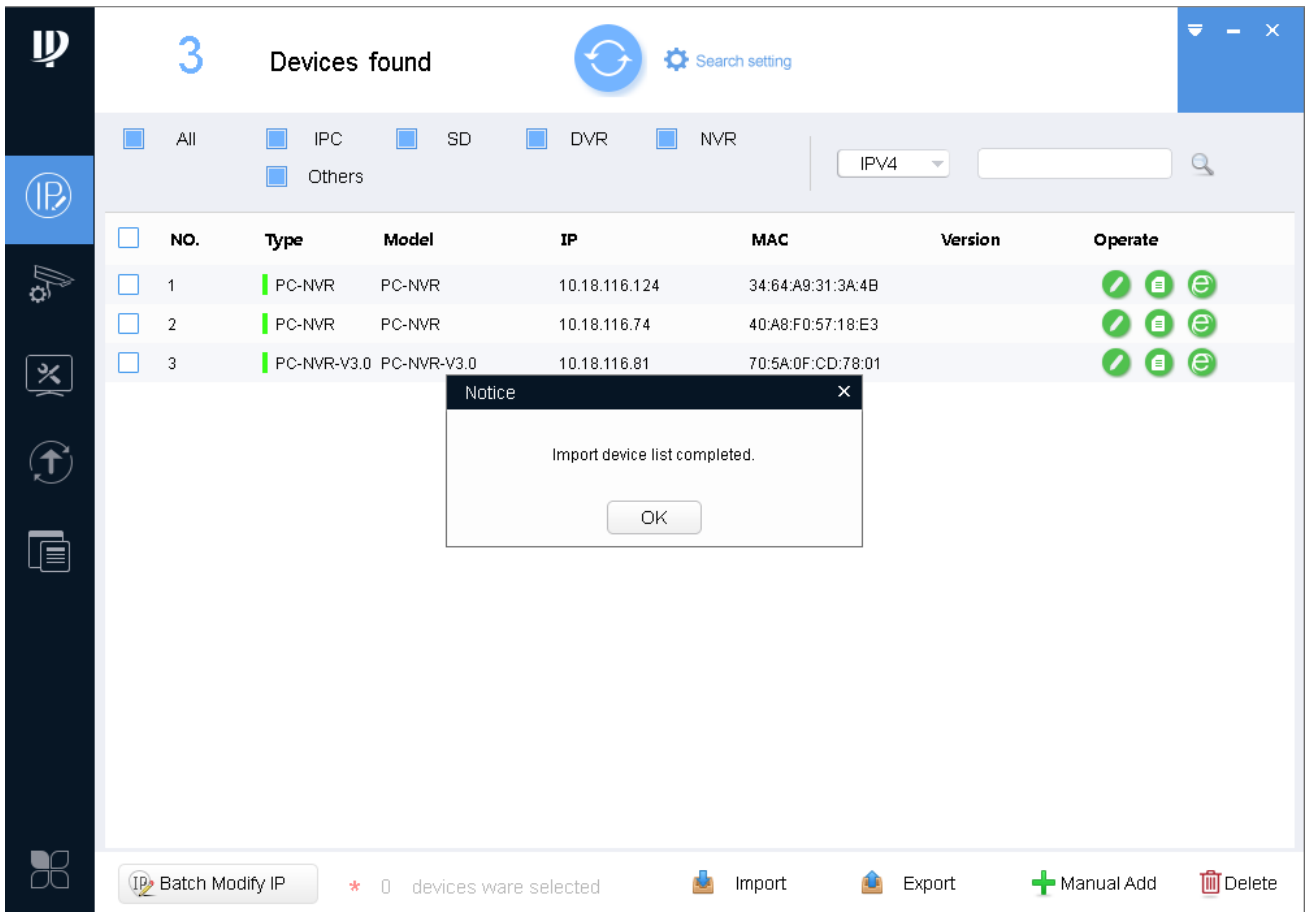


Figure 3-5

## 3.4 Modify IP


You can modify a single IP or batch modify IP.

- You can modify device IP one by one when there are few devices or login passwords of device are not the same.
- You can batch modify device IP when login passwords of device are the same.

### 3.4.1 Modify One IP

Step 1. Click .

System shows Modify IP Address interface.

Step 2. Click  of device you want to modify its IP.

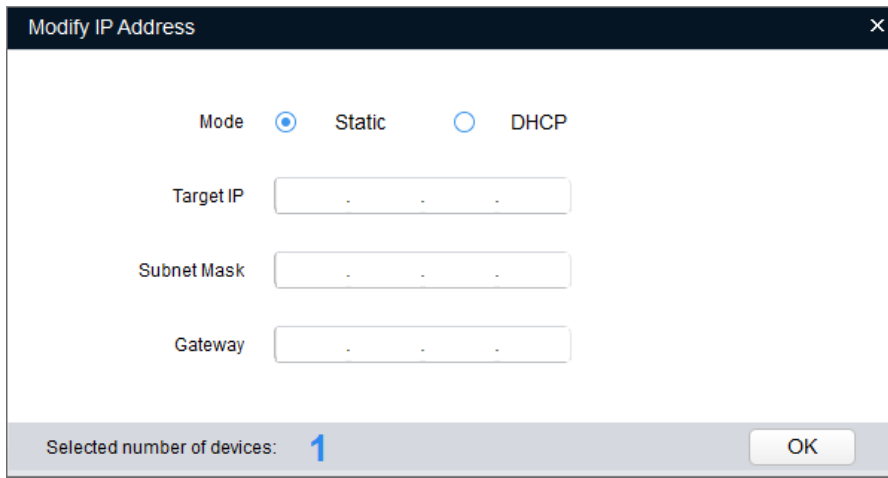
Step 3. Set mode, target IP, subnet mask and gateway.

Note:

If the device is not in device list, please search device again, see Ch 2.2.

Step 4. Set mode to static mode, and fill in target IP, subnet mask and gateway.

Step 5. Click OK.



Modify IP Address

Mode  Static  DHCP

Target IP


Subnet Mask

Gateway

Selected number of devices: 1

Figure 3-6


### 3.4.2 Batch Modify IP

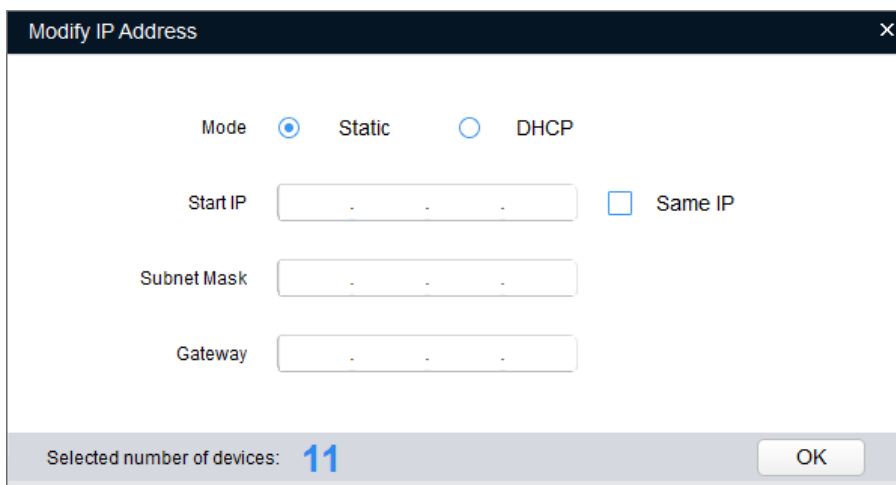
Step 1. Click  to enter batch modify IP interface.

Step 2. Select device you want to modify IP.

Note:

If the device is not in device list, please search device again, see Ch 2.2.

Step 3. Click  Batch Modify IP, system pops up Modify IP box. See Figure 3-7.



Modify IP Address

Mode  Static  DHCP

Start IP     Same IP

Subnet Mask

Gateway

Selected number of devices: 11

Figure 3-7



Step 4. Set start IP, subnet mask and gateway.

**Note:**

**Check Same IP will set the same IP for all devices involved.**


Step 5. Click OK. Device IP will be modified from by IP sequence.

### 3.5 Configure Device Parameter

Configure device parameter, including encoding parameter and video parameter.

#### 3.5.1 Set Encoding Parameter

ConfigTool supports setup of device bit stream type, encode mode, resolution and etc.

Step 1. Click , system shows device config interface, see Figure 3-8.

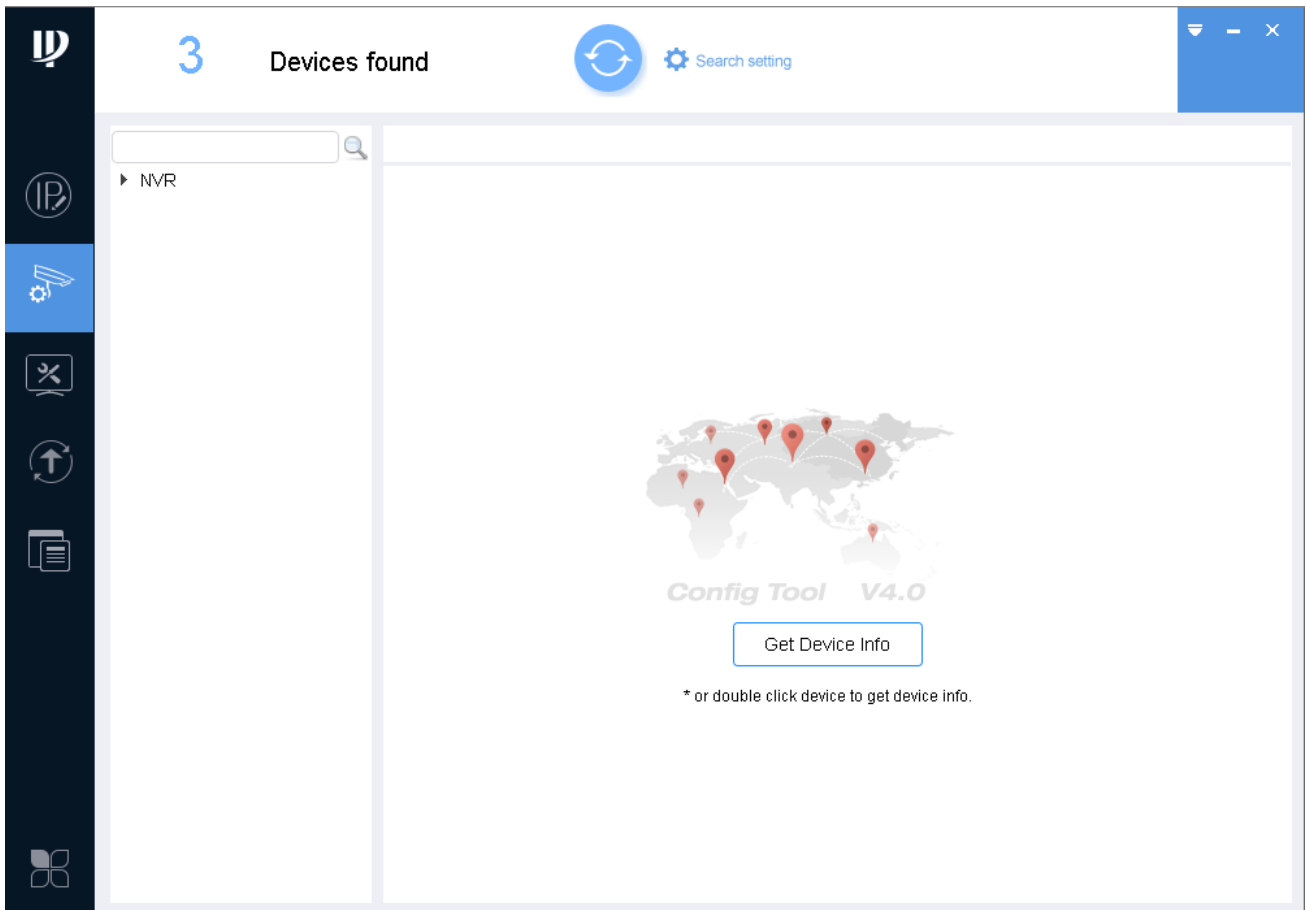


Figure 3-8

Step 2. Select device to configure encode parameter, click Get device info or double click device, system pops up Prompt box, click OK, and follow instructions to change password; or click Cancel.

System shows Encode interface, see [错误!未找到引用源。](#)

Note:

- Please change password after login for the first time.
- If the device you want to modify its IP is not shown in device list, please search device again. Please refer to Ch 3.3.

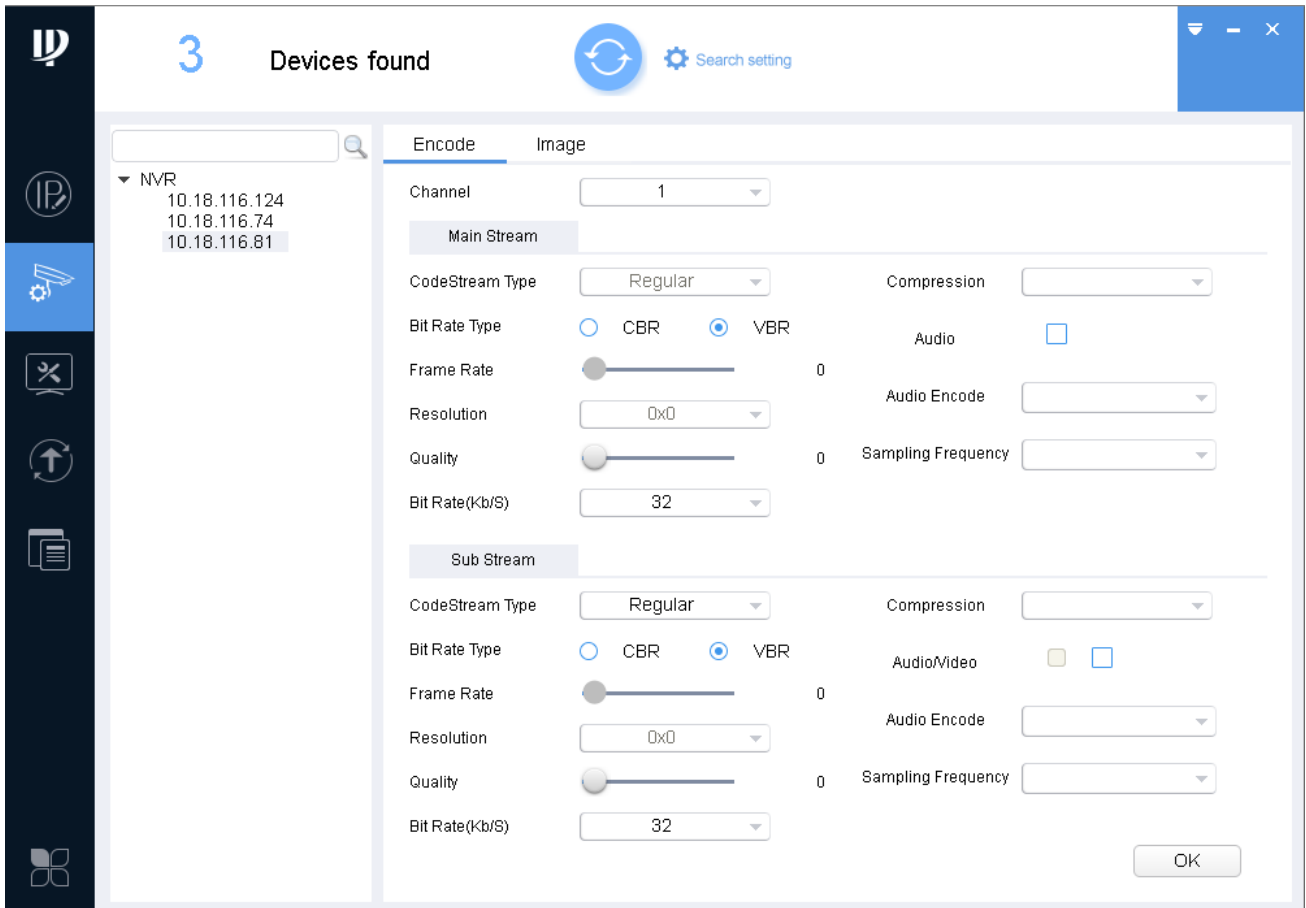


Figure 3-9

Step 3. Set encode parameter, see Chart 3-6..

Note:

Encode parameters of different devices may vary, please subject to actual device.

Parameter	Note
Channel	Select corresponding channel.
Code Stream Type	Device main stream or sub stream type.
Compression	Video compression format, you can configure: MJPG, H.264B, H.264H, H.264. <ul style="list-style-type: none"> <li>● H.264:Main Profile encoding</li> <li>● H.264H: High Profile encoding</li> <li>● H.264B: Baseline Profile encoding</li> <li>● MJPEG: under this encoding mode, video image required high bit rate to ensure</li> </ul>

	video quality, so the max bit rate in reference is recommended.
Bit Rate Type	Include CBR, VBR. You can set quality under VBR only.
Frame Rate	Frame rate of current channel. PAL: 1 fps~25fps. NTSC: 1fps~30 fps.
Resolution	Include multiple resolutions; each type corresponds to different bit rate.
Quality	Quality of video in current channel.
Bit Rate	<ul style="list-style-type: none"> <li>● Under CBR, this value is the max. Under dynamic video, video frame rate and quality may be lowered to ensure not exceeding this value.</li> <li>● Under VBR, this value is meaningless.</li> </ul>
Audio/Video	<ul style="list-style-type: none"> <li>● Check box next to audio to enable audio.</li> <li>● Check box next to video to let device monitor by sub stream.</li> </ul> For sub stream, only when video is enabled, you can enable audio.
Audio Encode	Audio encode mode. Include G.711A, G.711Mu, G.726 and AAC. Setup of audio encode mode are effective for both audio and talk.
Sampling Frequency	Sampling frequency of audio.

Chart 3-6

Step 4. Click OK.

### 3.5.2 Set Video Parameter

ConfigTool supports to view device live preview image and set video effect.

Step 1. Click , system shows device config interface. See Figure 3-10.

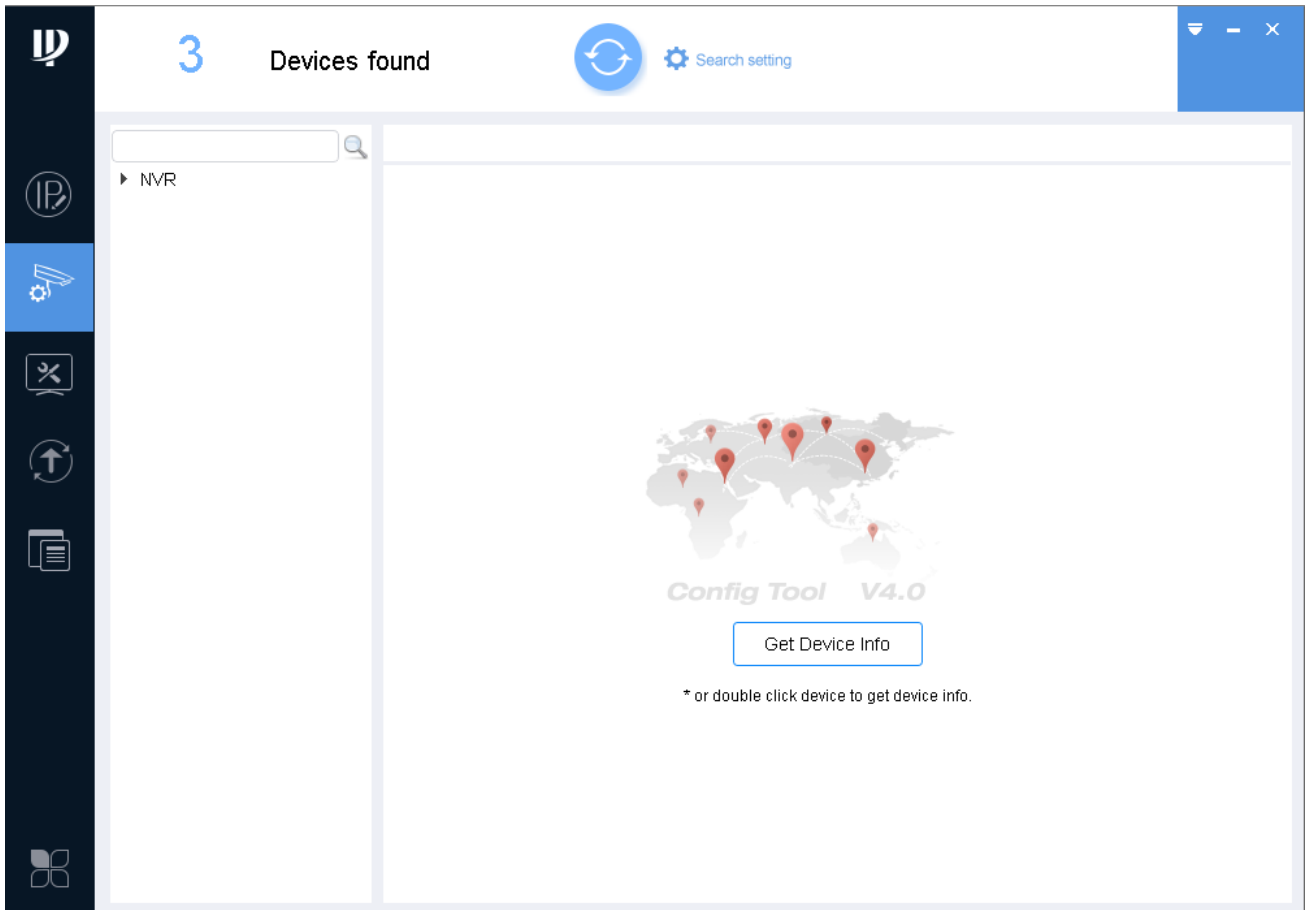


Figure 3-10



Step 2. In device list, select device to configure video parameter, click Get device info or double click device. System pops up Prompt box, click OK, and follow instructions to change password; or click Cancel.

Note:

- Please change password after login for the first time.
- If the device you want to modify its IP is not shown in device list, please search device again. Please refer to Ch 3.3.

Step 3. Click Image tab, system shows Image interface, see Figure 3-11.

Note:

- Click Default to restore default settings.
- Scroll mouse in video to zoom in/out. Right click to resume original size.
- Click  in video window, you can view the video in full screen. When video is in full-screen, click  to return to default size.

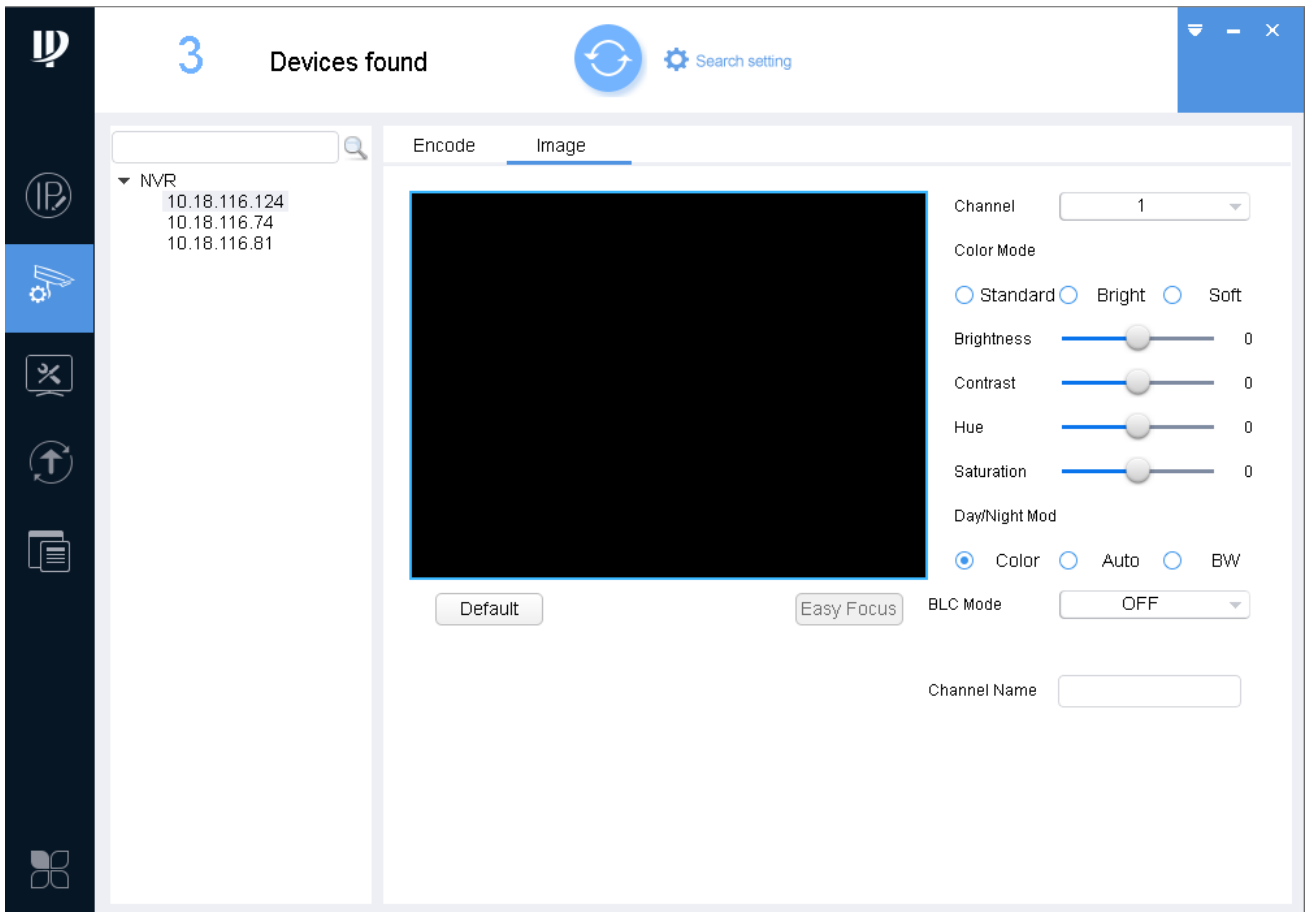


Figure 3-11

Step 4. Set channel and color, meantime you wan view preview. See Chart 3-7.

Parameter	Note
Channel	Select channel to be monitored.
Color Mode	Preset three modes (standard, bright, soft)
Brightness	Used to adjust overall brightness. When image is bright or dark, you can adjust this value. The overall brightness of image will change. The higher the value, the mode bright the image will be. Range: 0~100. Recommended value is 40~60. Default is 50.
Contrast	Used to adjust overall contrast. When image contrast is not OK, you can adjust this value. The overall contrast of image will change. The higher the value, the difference between bright and dark park is more obvious. Range: 0~100. Recommended value is 40~60. Default is 50.
HUE	Adjust HUE of image.
Saturation	Adjust image saturation.

BLC Mode	<ul style="list-style-type: none"> <li>● Off: Close BLC mode.</li> <li>● BLC: Increase brightness of main body in dark image.</li> <li>● WDR: When light comparison of image is strong, it adjusts strong and weak lights in image, increasing dynamic range of imaging model.</li> <li>● HLC: Reduce string light, and balance light.</li> </ul>
Day/Night Mode	Set video into color, black/white, or auto mode.
Easy Focus	Assist to adjust focus.
Default	It restores default value of brightness, contrast, hue and saturation.
Channel Name	Camera channel name.

Chart 3-7

Step 5. (Optional) Set Easy Focus.

- 1) Click Easy Focus. See Figure 3-12.



Figure 3-12

- 2) Follow guide on the right and start to sample, see Figure 3-13.



Figure 3-13

3) Adjust until image is clear as in Figure 3-14.

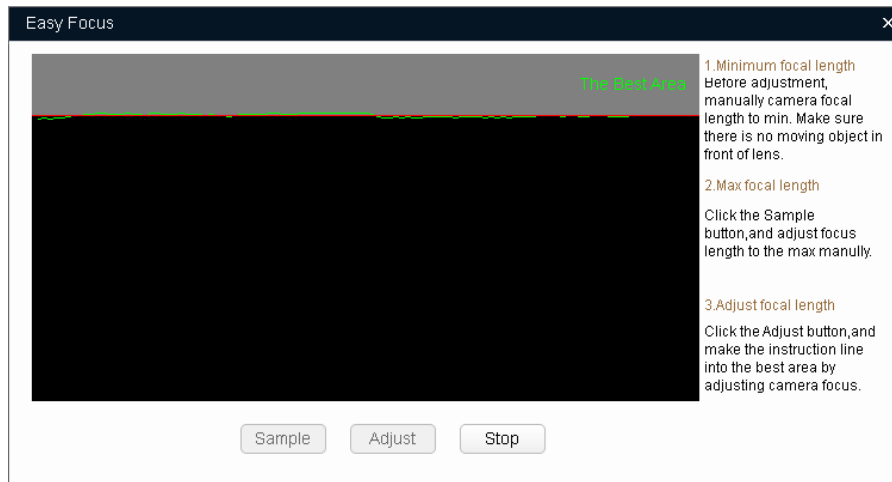


Figure 3-14

Note:

Red line is the definition value of current image. Green line is the definition value when focus changes from min to max.

### 3.6 Configure System Info

Configure system information, including time sync, reboot device, restore default settings and modify password.

### 3.6.1 Time Sync

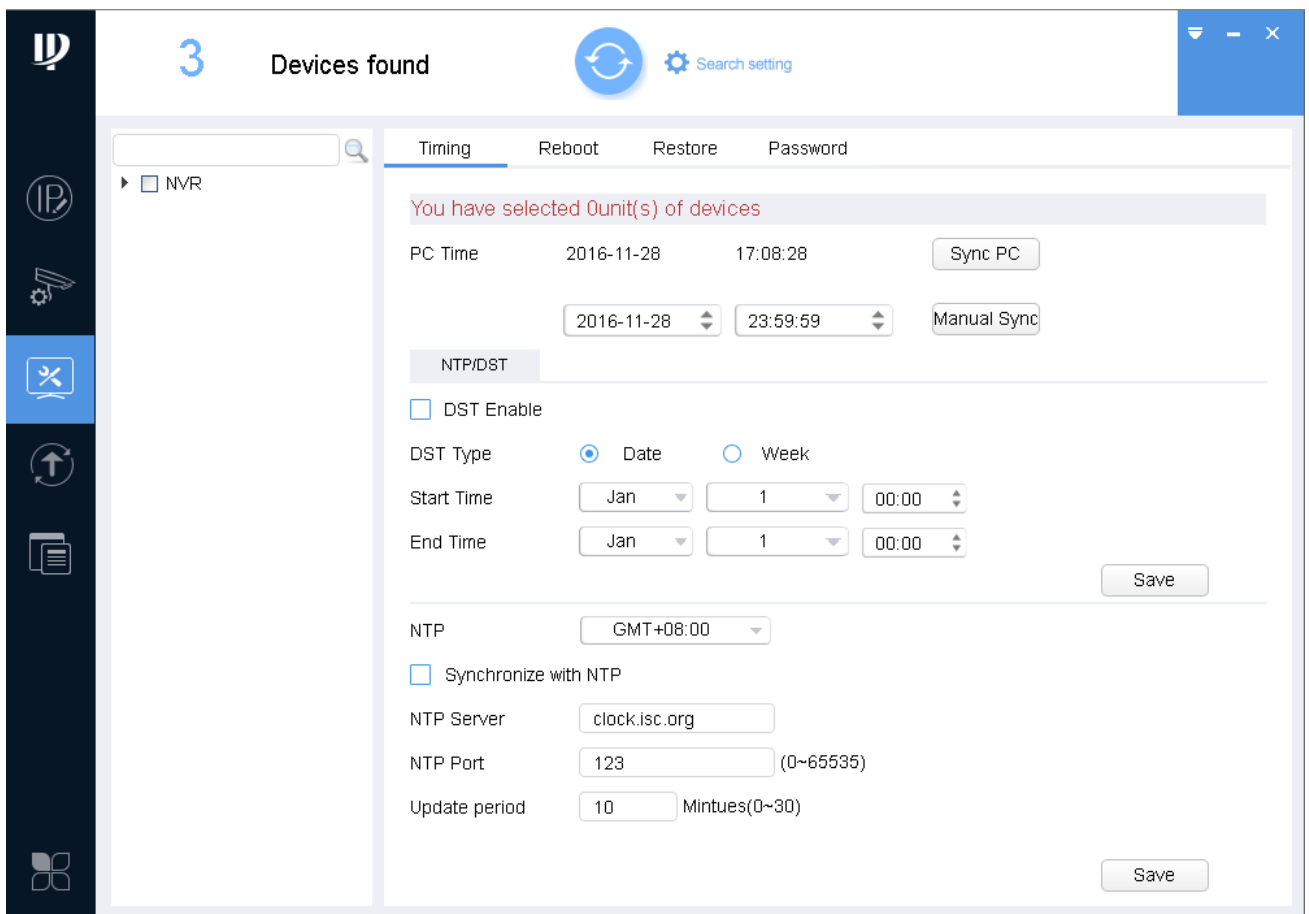



Figure 3-15

Step 1. Click , system shows system config interface.

Step 2. Click Timing tab. See Figure 3-15.

Step 3. Select one or more devices.

Note:

- If the device you want to modify its IP is not shown in device list, please search device again. Please refer to Ch 3.3.

Step 4. Set time.

You can use either of the following method to modify time.

- Enter time, click manually sync.
- Click Sync PC, to sync time with PC.
- Sync with NTP server, please refer to Chart 3-8.

Parameter	Note
Sync with NTP	Enable switch.



NTP Server	Set NTP server and port.
NTP Port	
Update Period	Interval of update.
Save	Save set NTP server info.

Chart 3-8

Step 5. (Optional) Select DST Enable, set DST. See Chart 3-9. Click Save.

Note:

You need this step if operating device in nation requiring DST.


Parameter	Note
DST Type	Select type to be date or week.
Start Time	Set start time and end time of DST.
End Time	

Chart 3-9

### 3.6.2 Reboot

**Warning:**

**Reboot will cause operation interruptions, so please reboot device when operation is not frequent.**

Step 1. Click , system shows system config interface.

Step 2. Click Reboot tab, system shows reboot interface. See Figure 3-16.

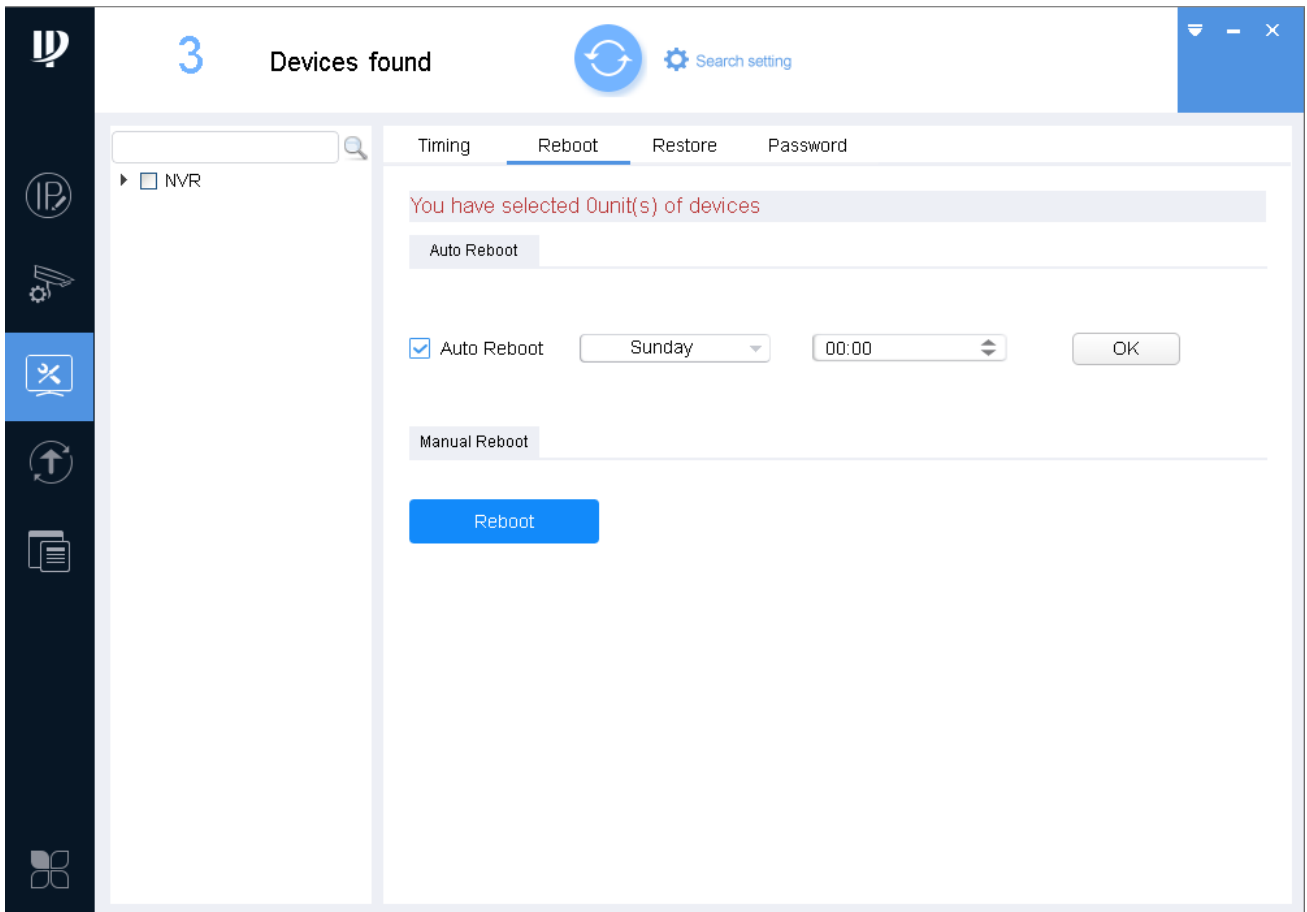


Figure 3-16

Step 3. Select one or more devices.

Note:


- If the device you want to modify its IP is not shown in device list, please search device again. Please refer to Ch 3.3.

Step 4. Select method of reboot according.

- Check auto reboot, set week and time, click OK. Device will reboot at the set time automatically.
- Click Reboot to reboot immediately.

### 3.6.3 Default

Default function is to restore device general setup, encode setup, record setup, serial setup, alarm setup, video detection and video control.

Step 1. Click , system shows system config interface.

Step 2. Click Restore tab, system shows Restore interface. See Figure 3-17.

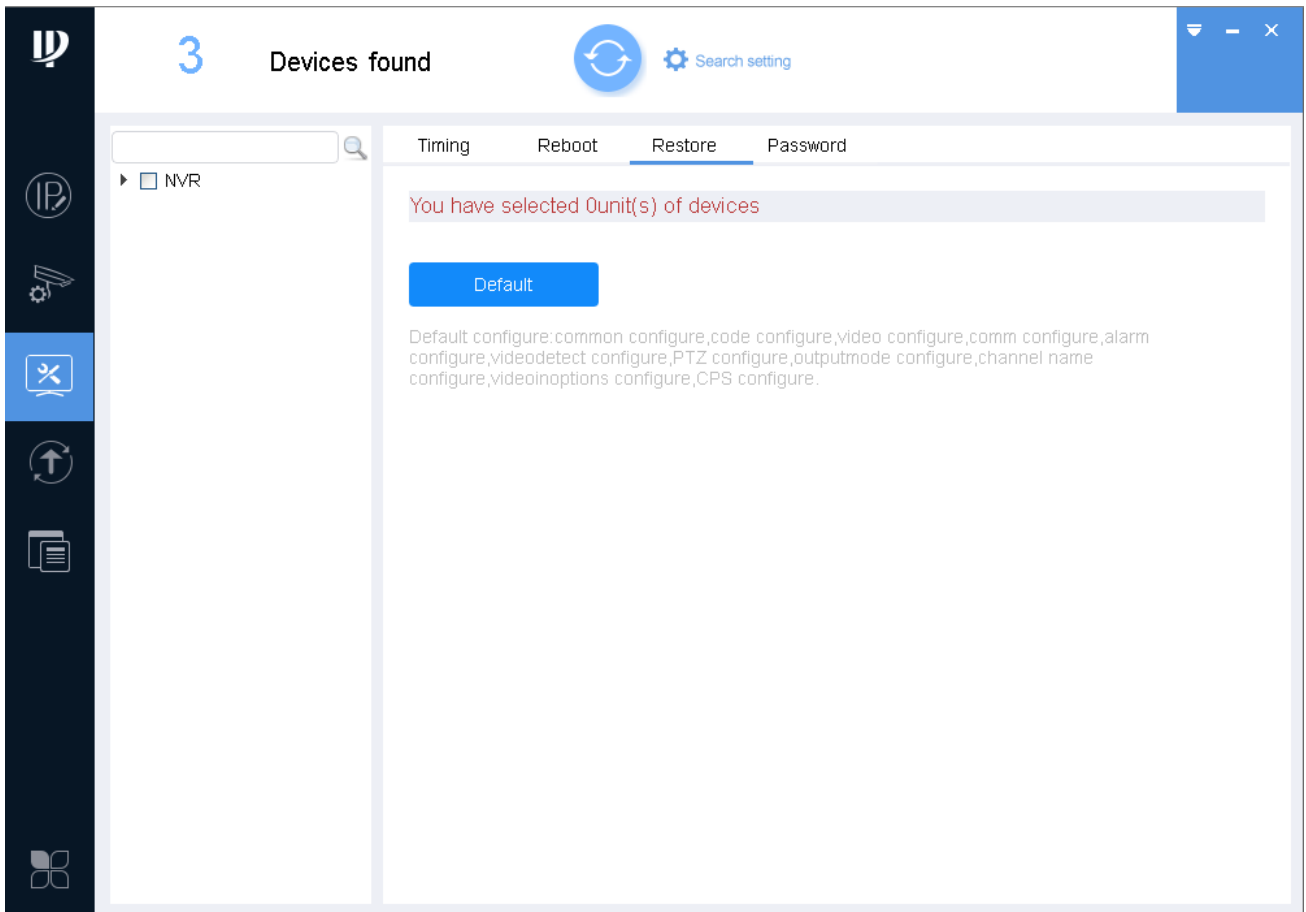


Figure 3-17

Step 3. Select one or more devices.


Note:

- If the device you want to modify its IP is not shown in device list, please search device again. Please refer to Ch 3.3.

Step 4. Click Default.

### 3.6.4 Set Password

Modify device login password.

Step 1. Click . System shows system config interface.

Step 2. Click Password tab. System shws Password interface. See Figure 3-18.

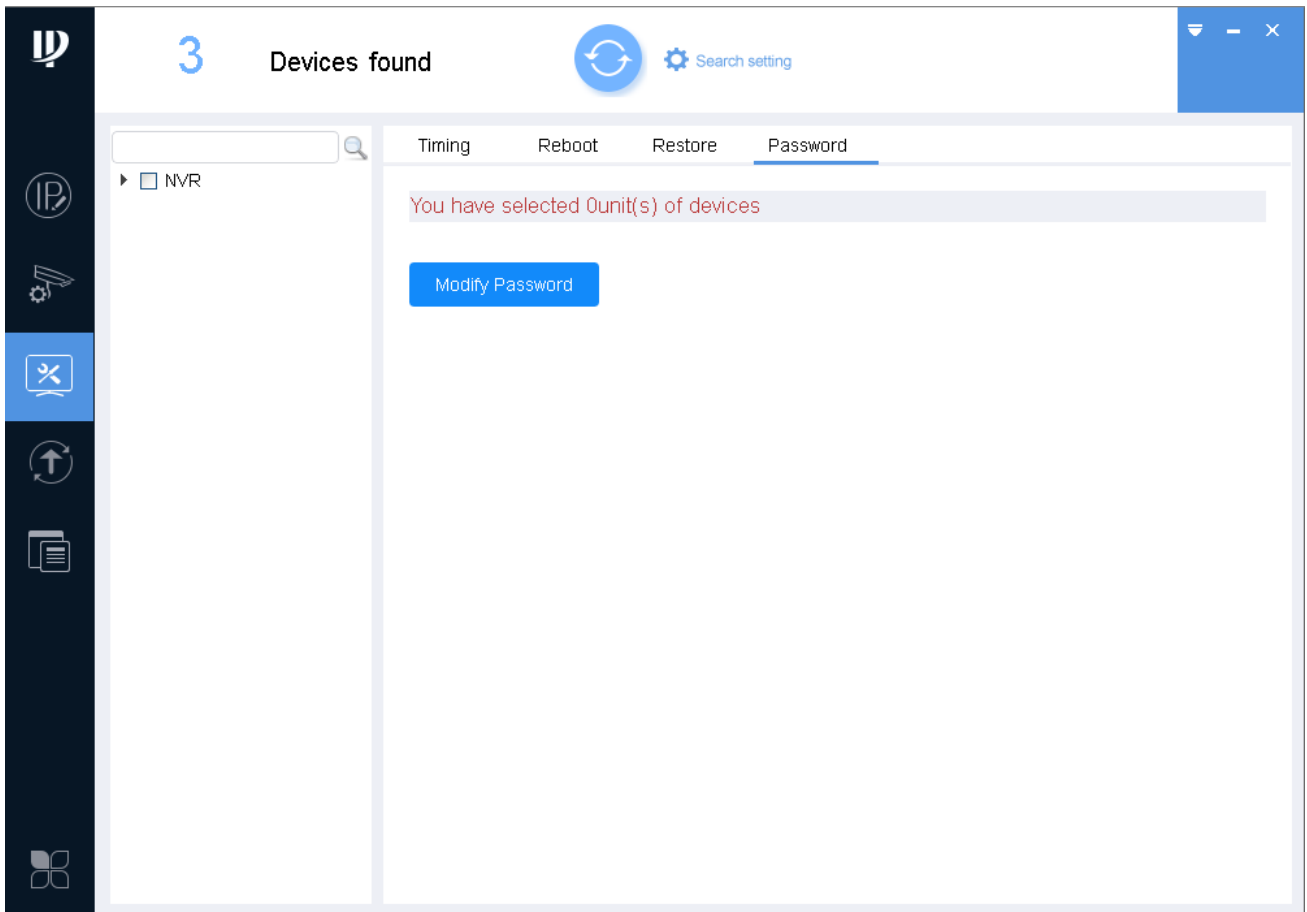


Figure 3-18

Step 3. Select one or more devices.

Note:

- A device can be selected more than once, if you select more than one device, the batch device will set auto reboot at the same time.
- If the device you want to modify its IP is not shown in device list, please search device again. Please refer to Ch 3.3.

Step 4. Click Modify Password.


Step 5. Enter old password, new password and confirm password.

Step 6. Click OK.

## 3.7 Upgrade Device

ConfigTool supports to upgrade one device and upgrade multiple devices.

### 3.7.1 Single Upgrade

Step 1. Click , system shows upgrade interface, see Figure 3-19.

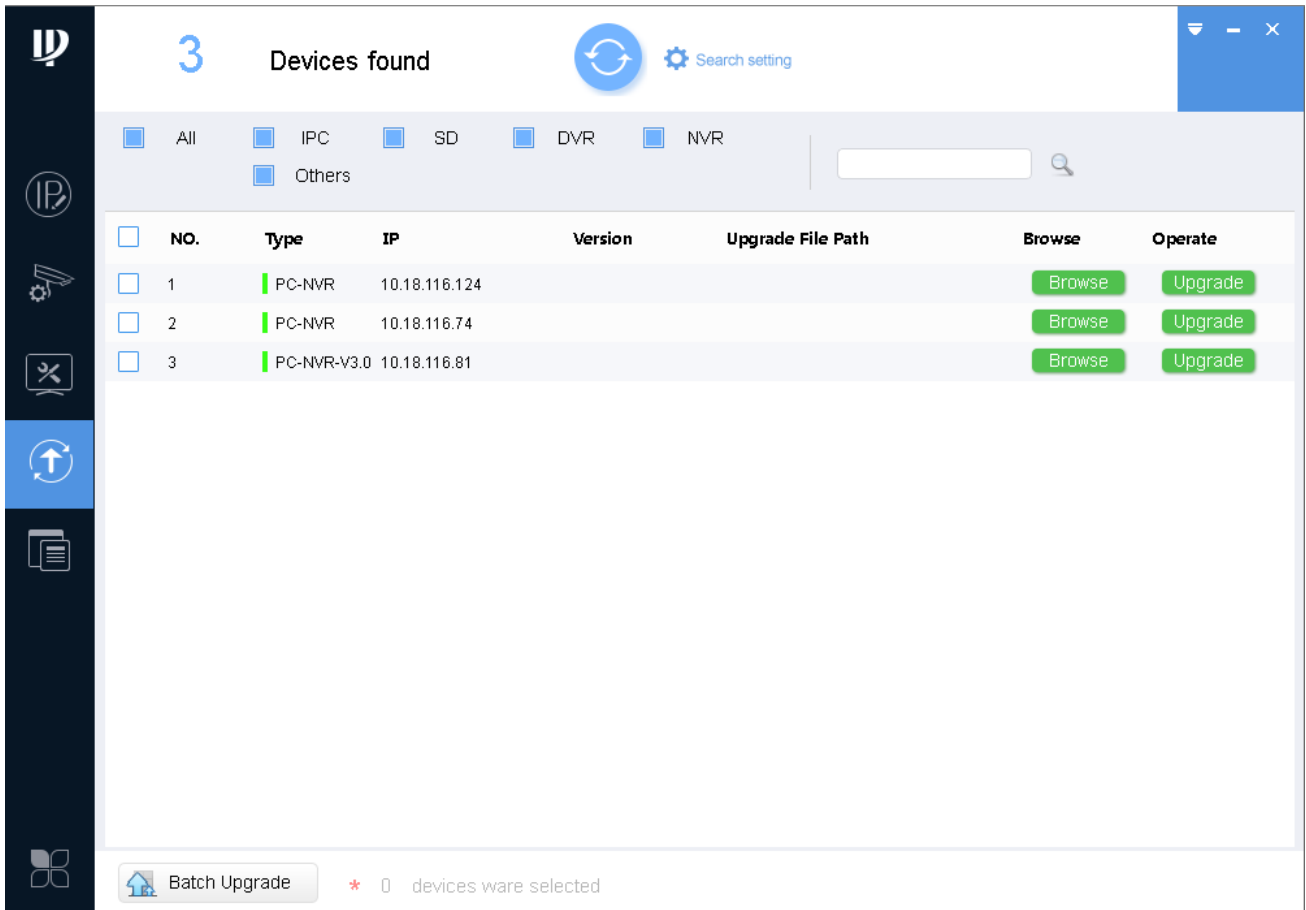


Figure 3-19

Step 2. Click a device you want to upgrade, select upgrade file.

1. Click Browse of corresponding device you want to upgrade.

Note:

If the device you want to modify its IP is not shown in device list, please search device again.

Please refer to Ch 3.3.

2. Select upgrade file.
3. Click Open.

Step 3. After you click Upgrade, system will start to upgrade. When upgrading is complete, device will auto reboot

**Note:**

**If device goes offline during upgrading process, then ConfigTool will stop at upgrading interface and once device is online again, upgrading will continue.**

### 3.7.2 Batch Upgrade

Step 1. Click , system shows upgrade interface, see Figure 3-20.

Step 2. Check devices you want to upgrade

**Note:**

- All devices you select must be upgraded to the same version of software.
- If the device you want to modify its IP is not shown in device list, please search device again. Please refer to Ch 3.3.

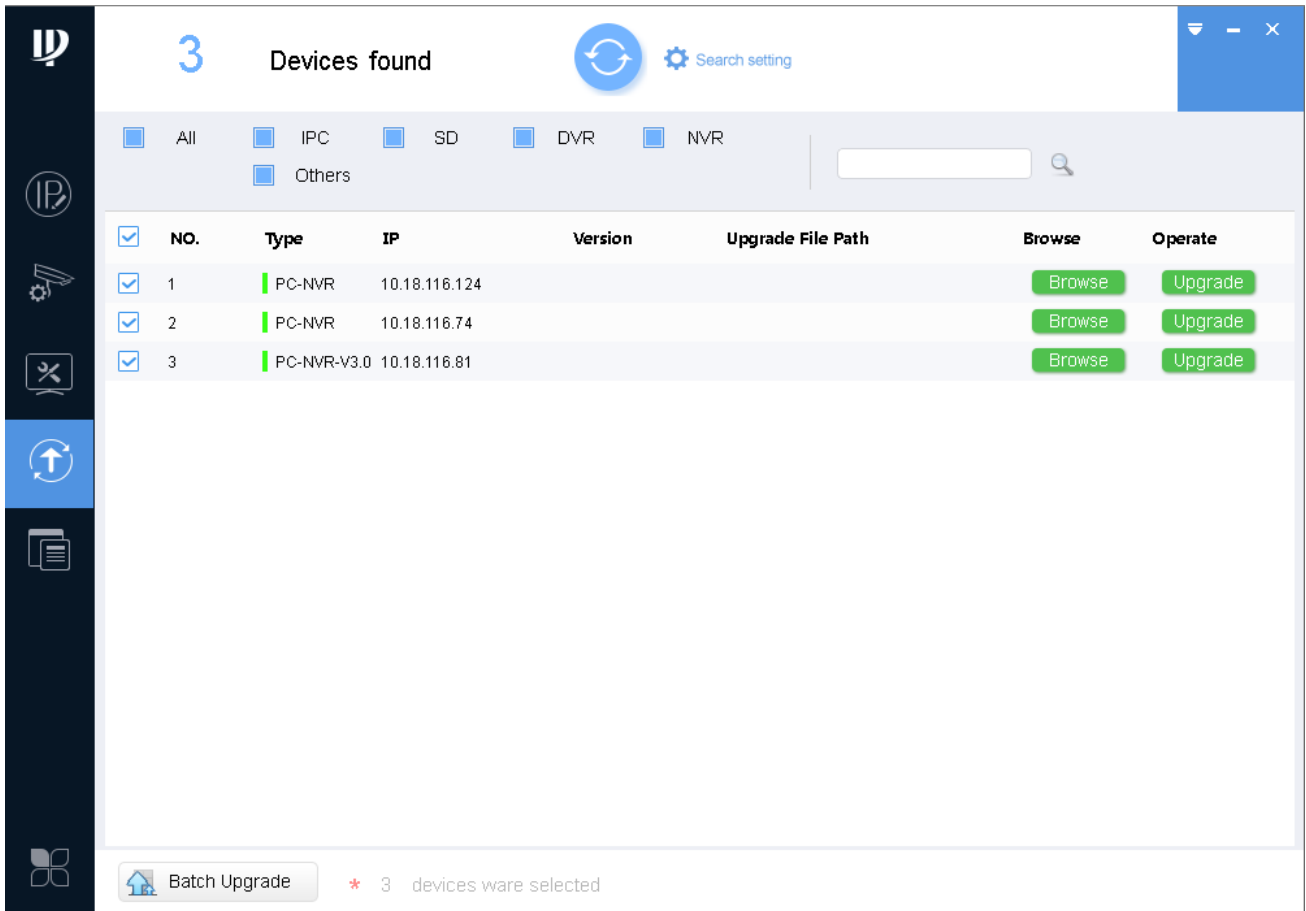


Figure 3-20

Step 3. Click Batch Upgrade, system shows Batch Upgrade box, see Figure 3-21.

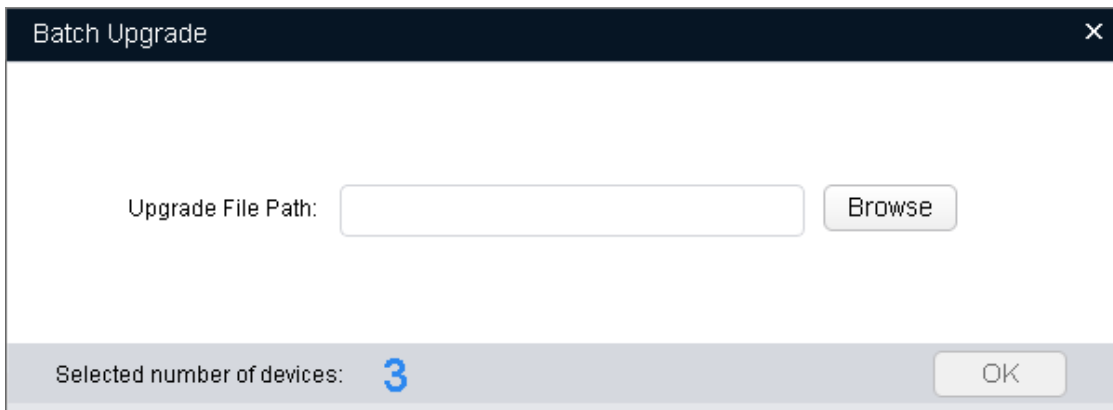


Figure 3-21

Step 4. Click Browse, select file, see 错误!未找到引用源。 .

Step 5. Click OK, system starts to upgrade.

**Note:**

**If devices go offline during upgrading process, then ConfigTool will stop at upgrading interface and once device is online again, upgrading will continue.**

## 3.8 Configure Template

It includes create template and application template.

- By creating template, you can back up or save device video config and encode parameter.
- By applying saved template, you can restore or batch config device video config and encode parameter.

### 3.8.1 Create Template

#### 3.8.1.1 Manually Set Template

Step 1. Click . See Figure 3-22.

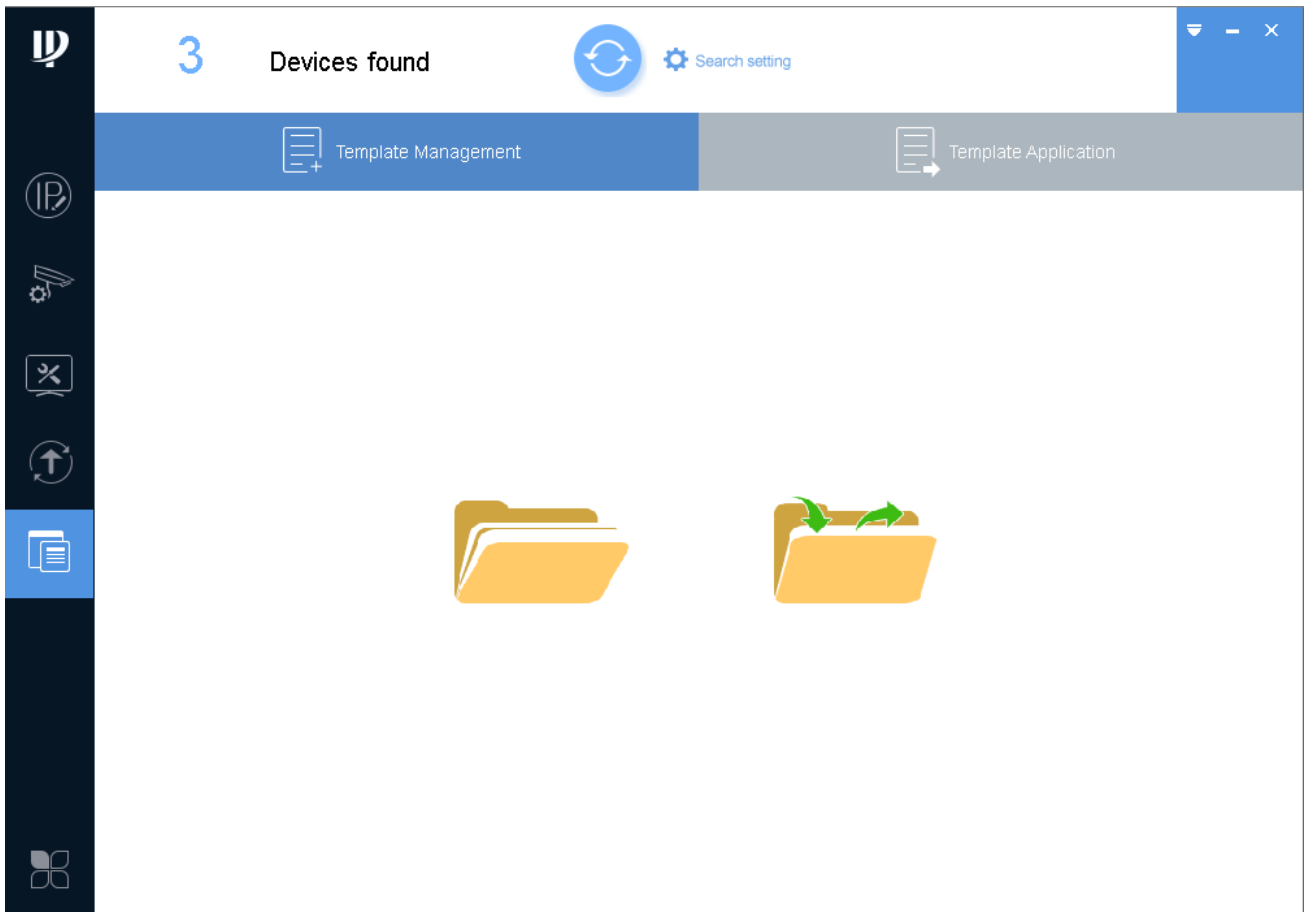



Figure 3-22

Step 2. Manually set template.

1. Click . System shows prompt box, click Cancel. System shows Template Management interface, see Figure 3-23.

Note:

After you complete template setup, click Template Application, click Apply to apply this template to other device.



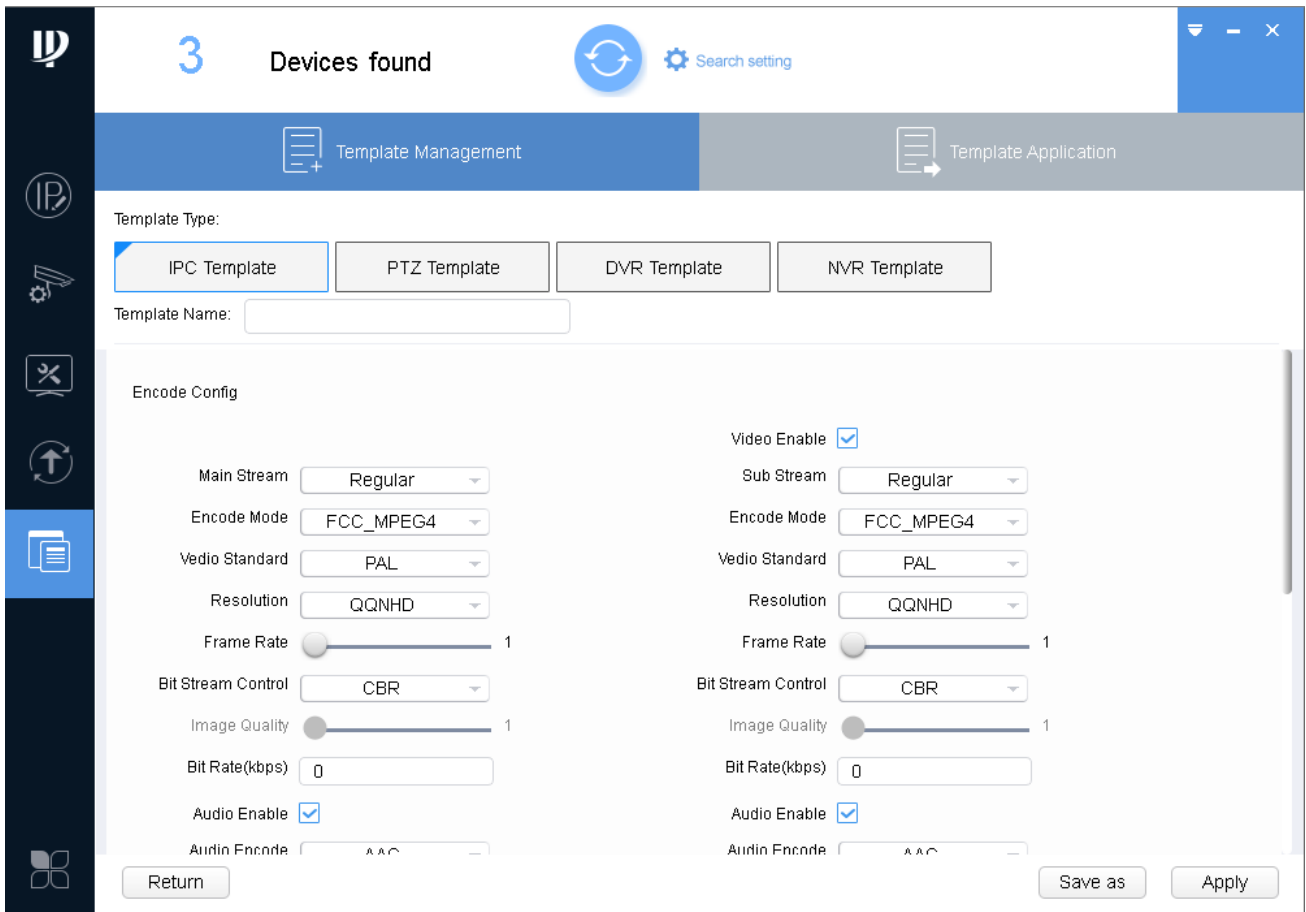


Figure 3-23

2. Select type of template, set template name, modify encode config and video config accordingly.
- Step 3. Save template.
1. Click Save as. See Figure 3-24.

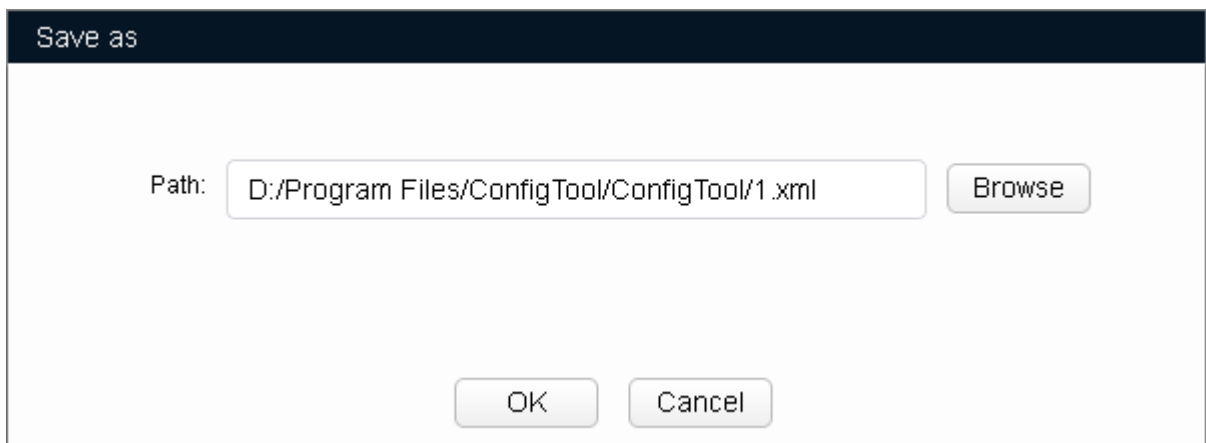


Figure 3-24

2. Click Browse, select path to save.
3. Click OK.

### 3.8.1.2 Export Device Template

Step 1. Click . See Figure 3-25.

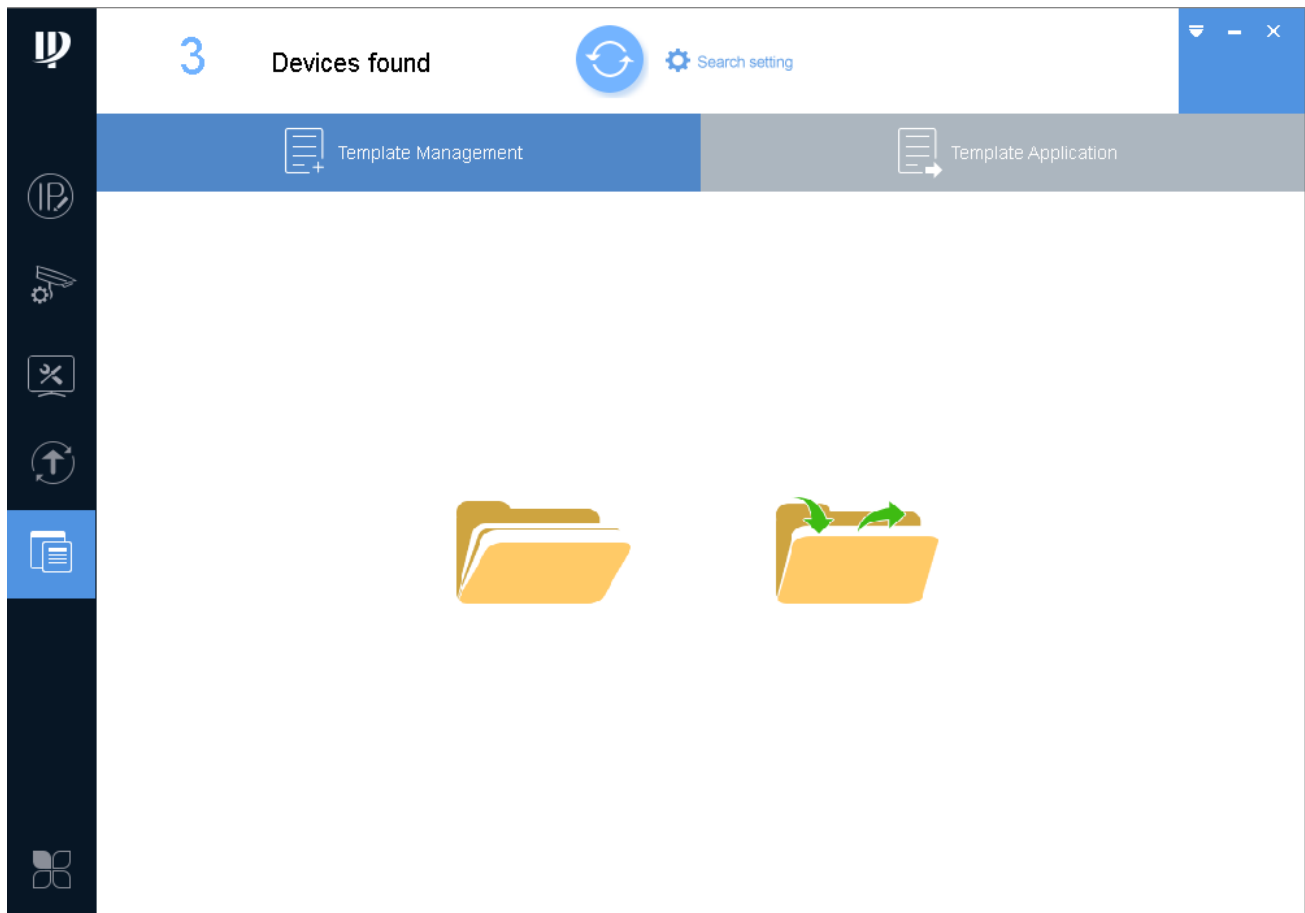



Figure 3-25

Step 2. Export template.

1. Click . System shows prompt box, click Cancel. System shows Template interface, see Figure 3-26.

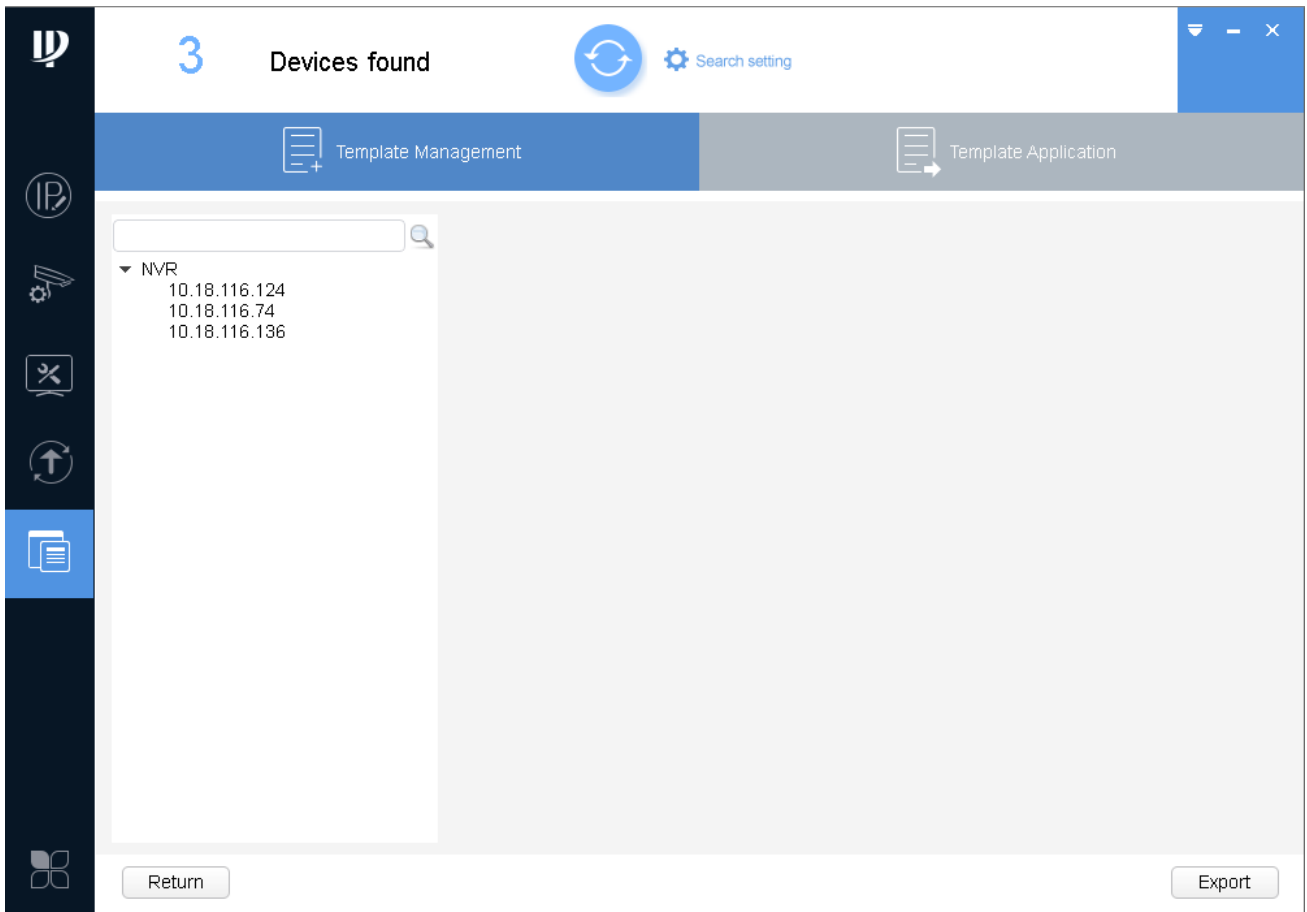


Figure 3-26

2. In device list, select device, click Export.

System pops up export box, click OK. The system starts to export device template.

After export complete, system shows Template Management interface, see Figure 3-27.

Note:

- If the device you want to modify its IP is not shown in device list, please search device again. Please refer to Ch 3.3.
- After template setup is complete, click Apply to apply exported device template to other device.

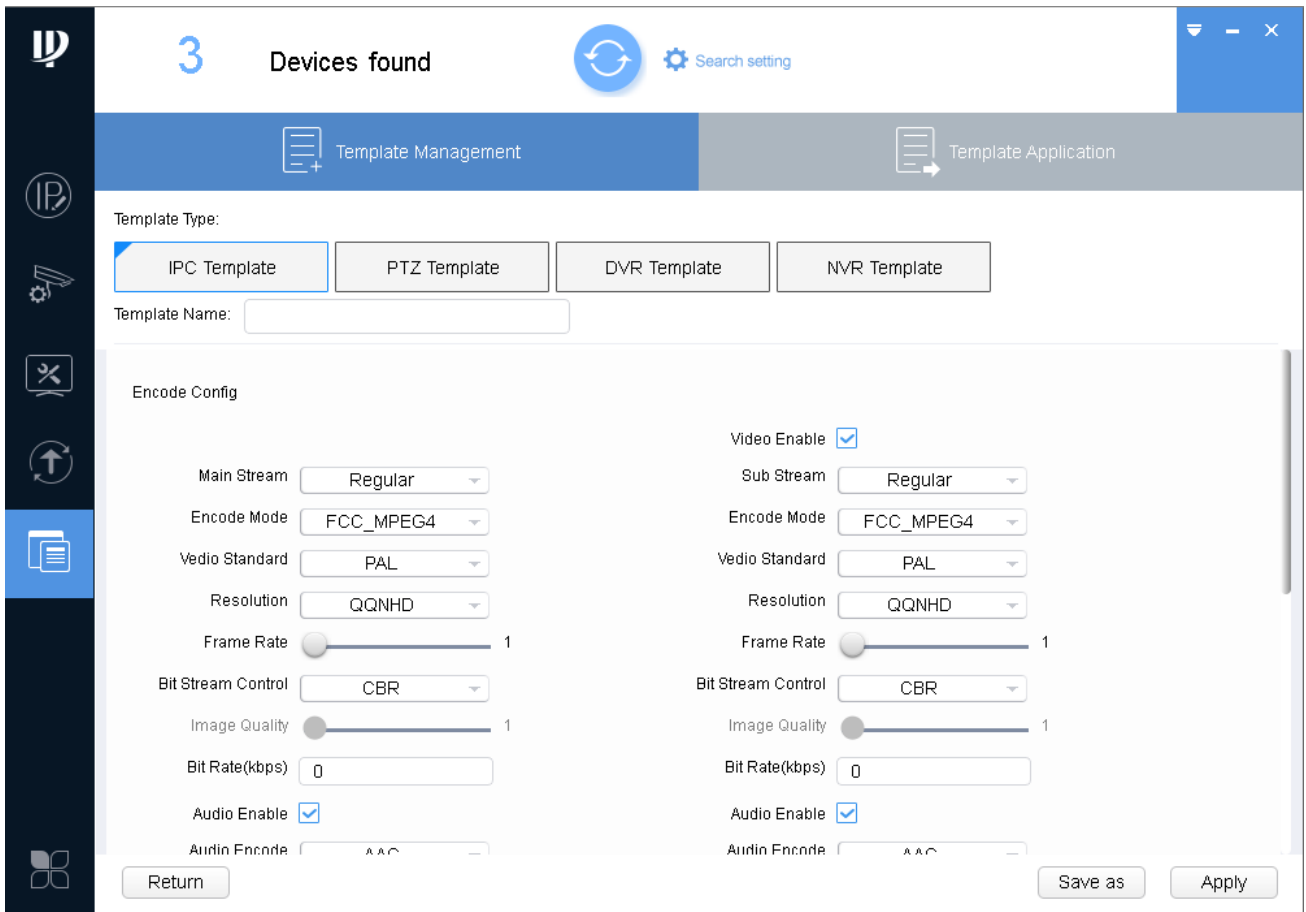


Figure 3-27

3. Select template type, set template name.

Step 3. Save template.

1. Click Template Application, system pops up Save as box, see Figure 3-28.

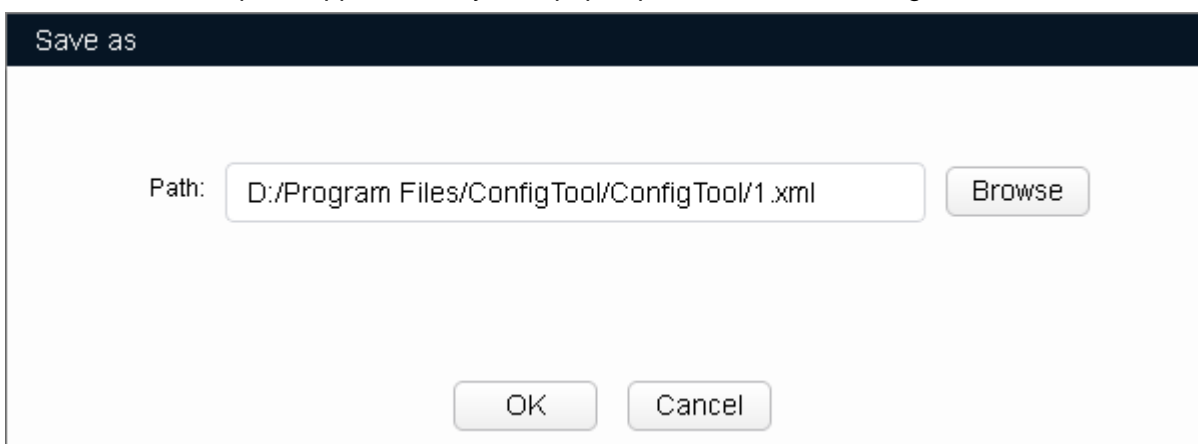


Figure 3-28

2. Click Browse, select storage path of template.
3. Click OK to save template.

### 3.8.2 Template Application

By applying saved template, you can restore or batch config device video config and encode parameter.

Step 1. Click . See Figure 3-29.

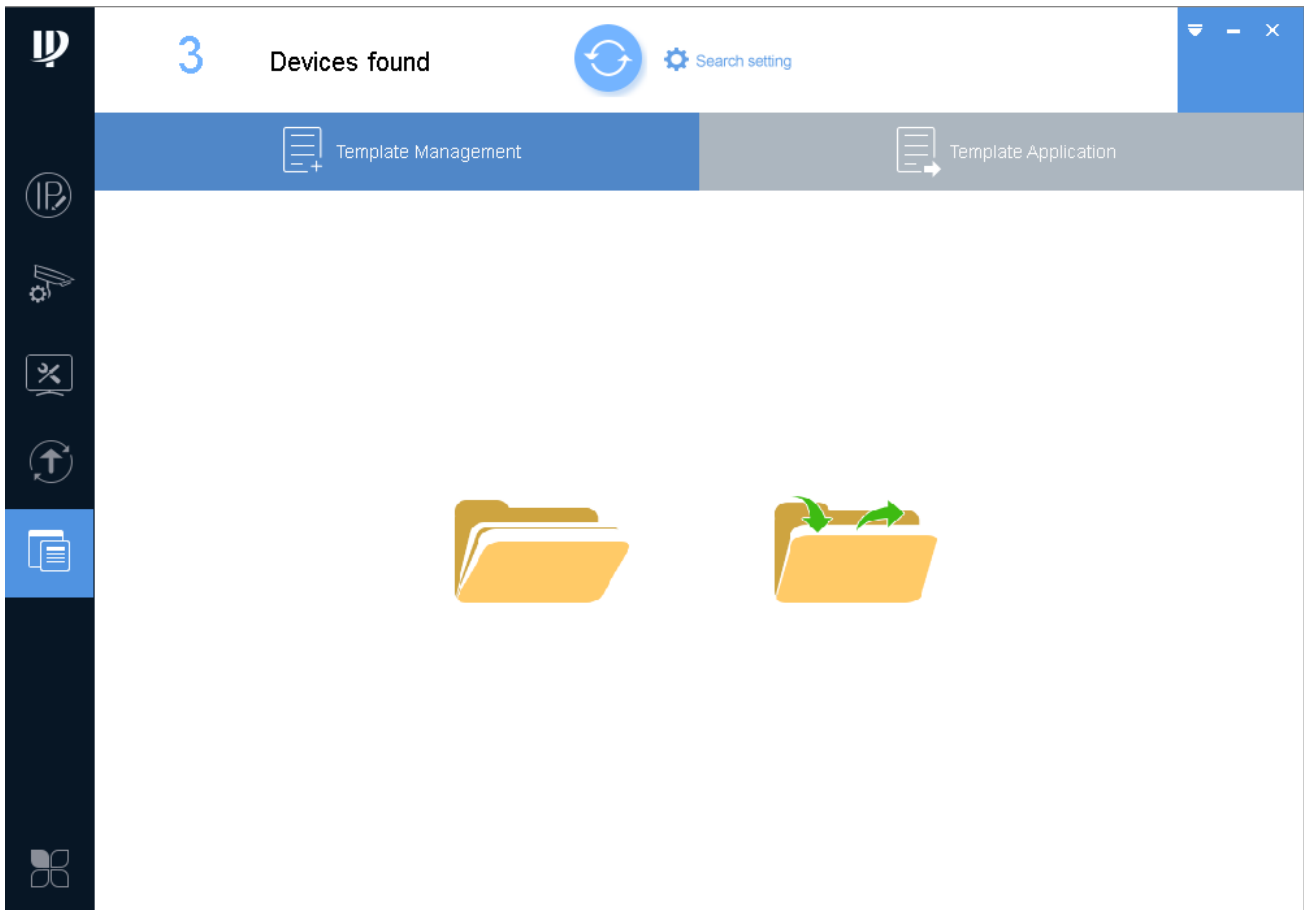


Figure 3-29

Step 2. Load template.

1. Click . See Figure 3-30.

Note:

Before loading template, make sure the template file exists. If there is no template file, please see Ch 3.8.1.

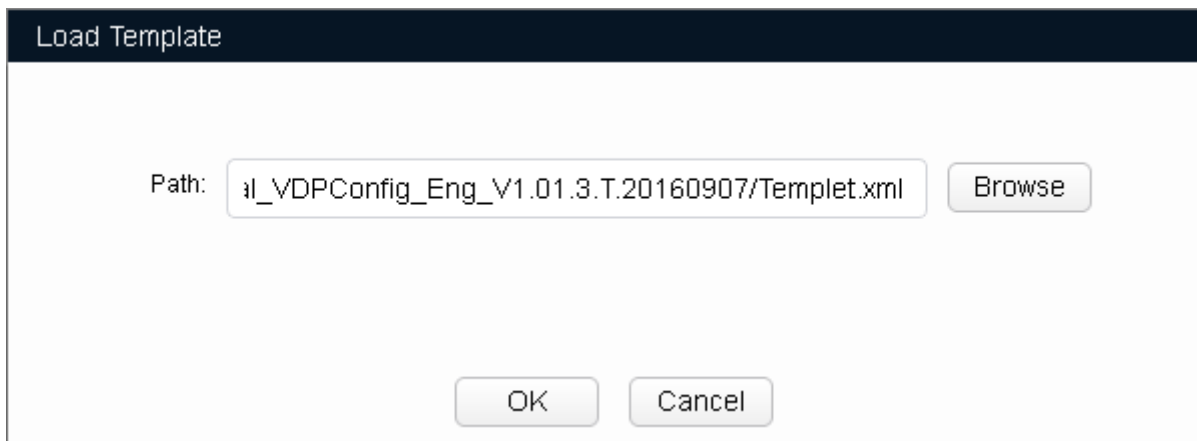


Figure 3-30

2. Click Open, select template file.
3. Click OK, see Figure 3-31.

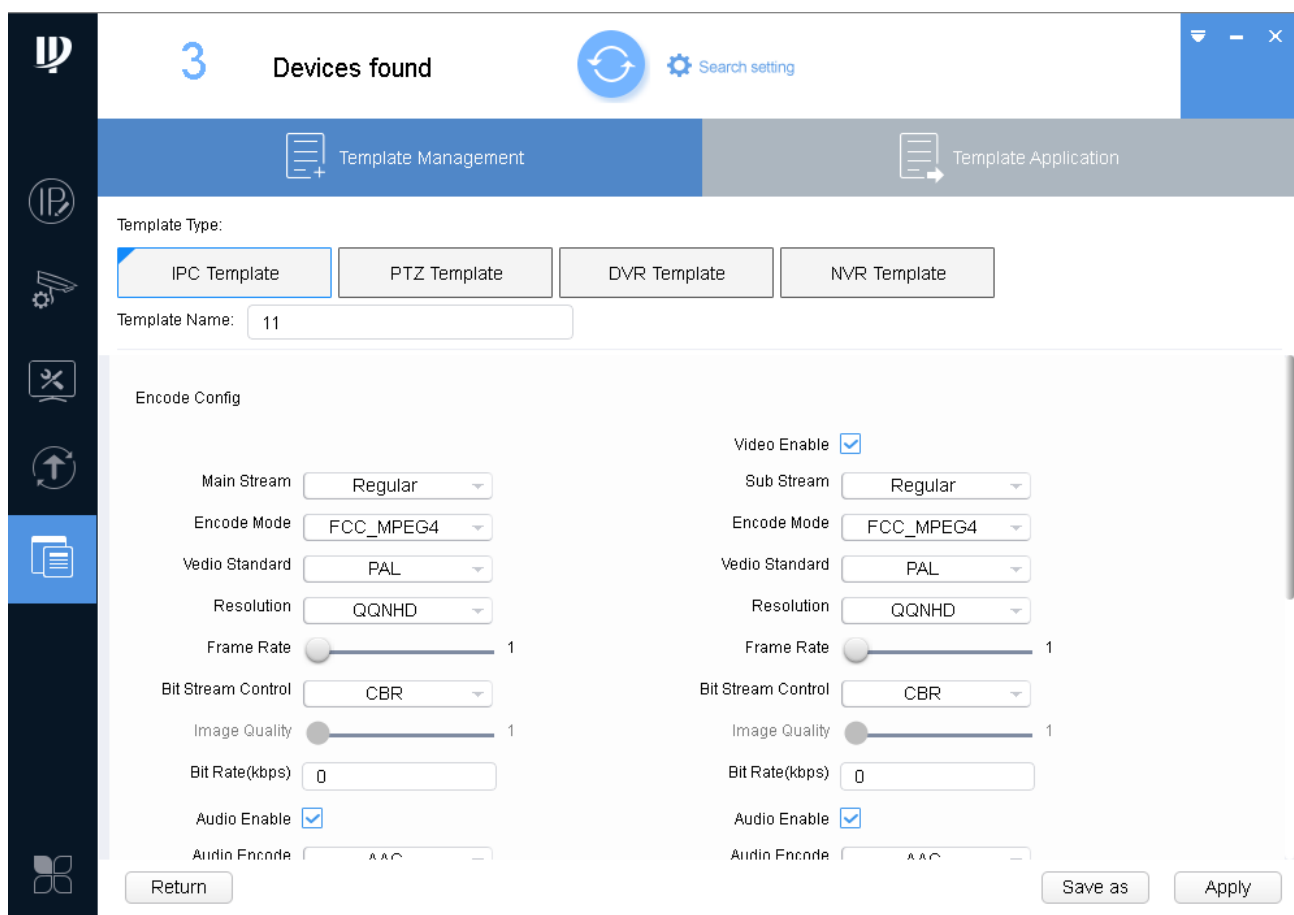


Figure 3-31

**Step 3. Apply template.**

1. Click Apply. See Figure 3-32.

Note:

- Click Other Template to switch template.

- If the device is not in device list, please search device again, see Ch 3.3.

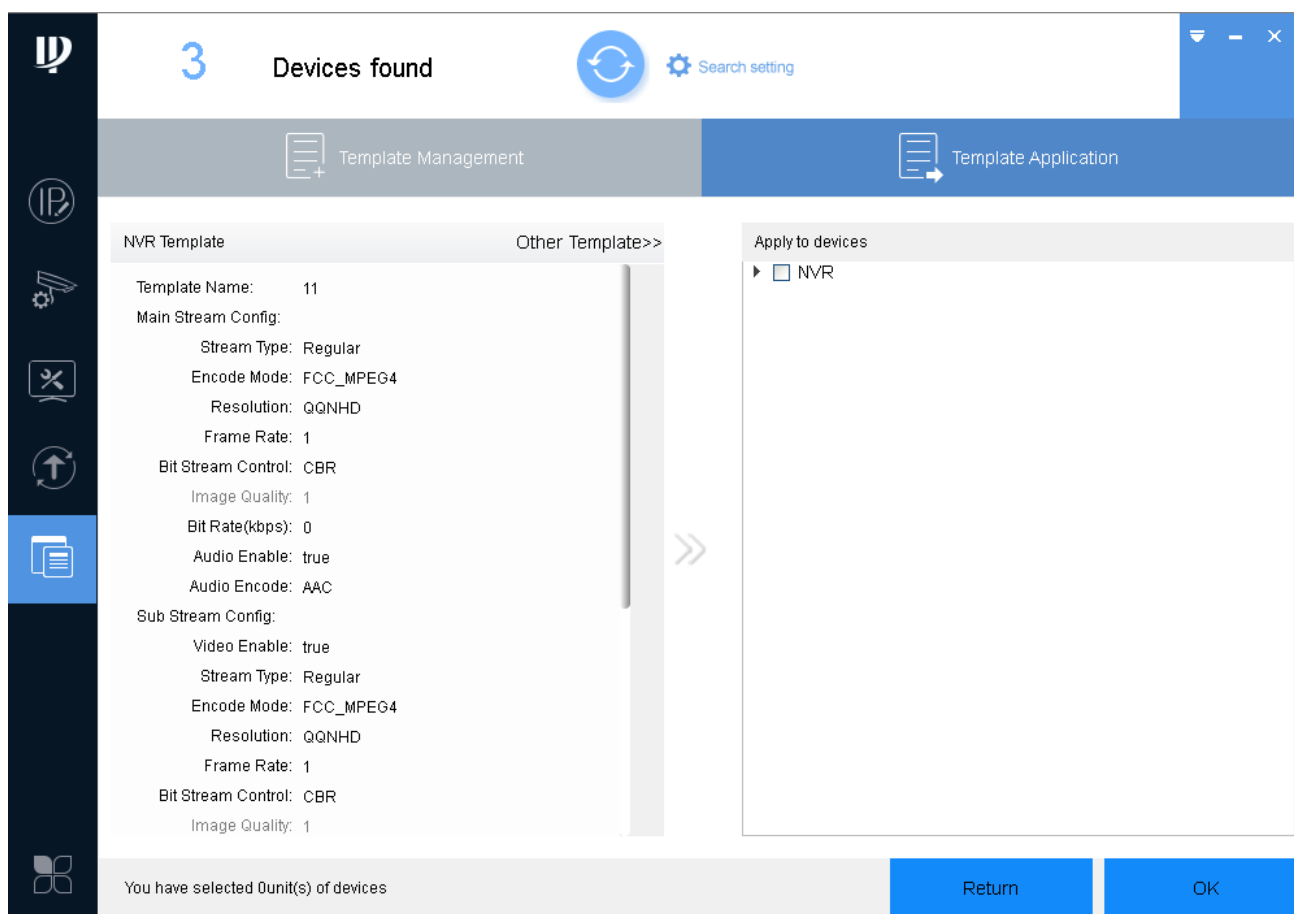


Figure 3-32

2. Select device you want to modify parameter, click OK. System pops up Application Template box, click OK. System starts to apply template.

When template is applied, device shows result.  means there is failed parameter setup. 

means there is successful parameter setup. Click either  or  to view details.

### 3.9 Package Center

You can load, use or uninstall program. The system has loaded programs of ARCCConfig, ACSCConfig, VDPCConfig, BatchConfig and LensSelector, please select program accordingly, see Chart 3-10.

Application	Function
ARCCConfig	Used to set and maintain alarm controller and BUS alarm controller. You

	can modify device IP, sync device time, reboot device and restore default, upgrade device.
ACSCConfig	Used to set and maintain access control device. You can modify device IP, sync device time, reboot device and restore default, upgrade device.
VDPCConfig	Used to set and maintain video talk VTO and VTH. You can modify device IP, sync device time, reboot device and restore default, upgrade device.
BatchConfig	Used to set and maintain IPC, NVR and etc. You can modify device IP, batch modify password, batch upgrade, batch add white list or black list.
LensSelector	Used to install analog camera, and select appropriate lens and position of camera.

Chart 3-10

### 3.9.1 Load Program

After you receive special tool (such as VDPCConfigTool) package, you can embed it into ConfigTool.

Step 1. Click . See Figure 3-33.

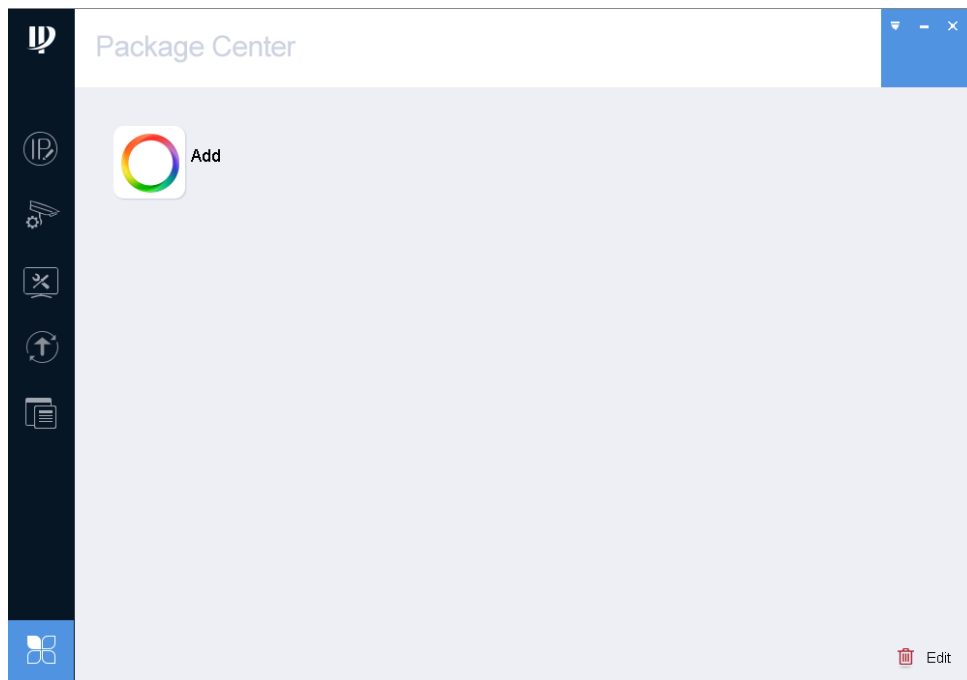


Figure 3-33

Step 2. Click Add, select package of tool. System asks if you want to install tool.

Step 3. Click OK. System starts to install the program, and when installation is complete, see Figure 3-34.



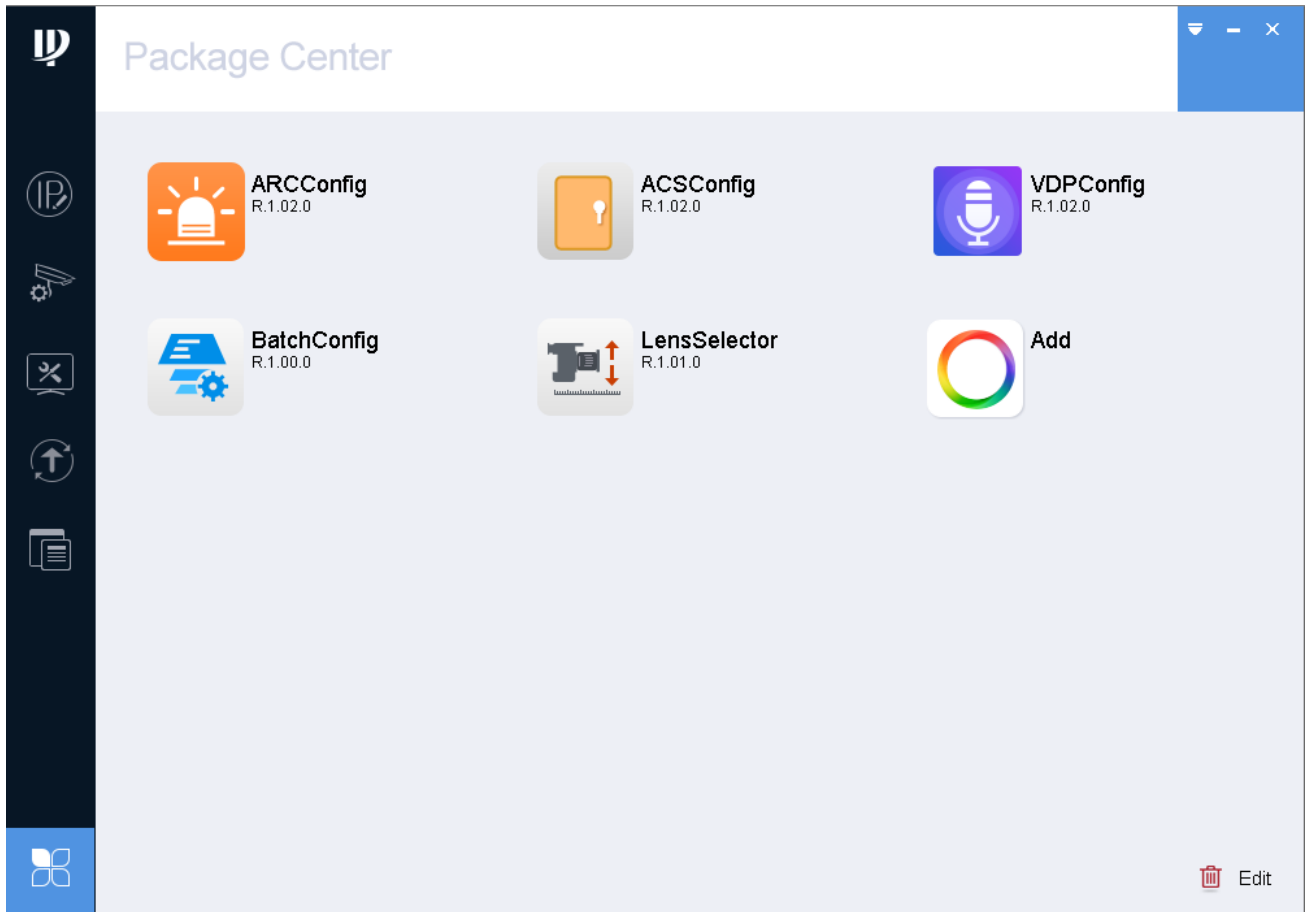


Figure 3-34

### 3.9.2 Uninstall Program

Step 1. Click . See Figure 3-35.

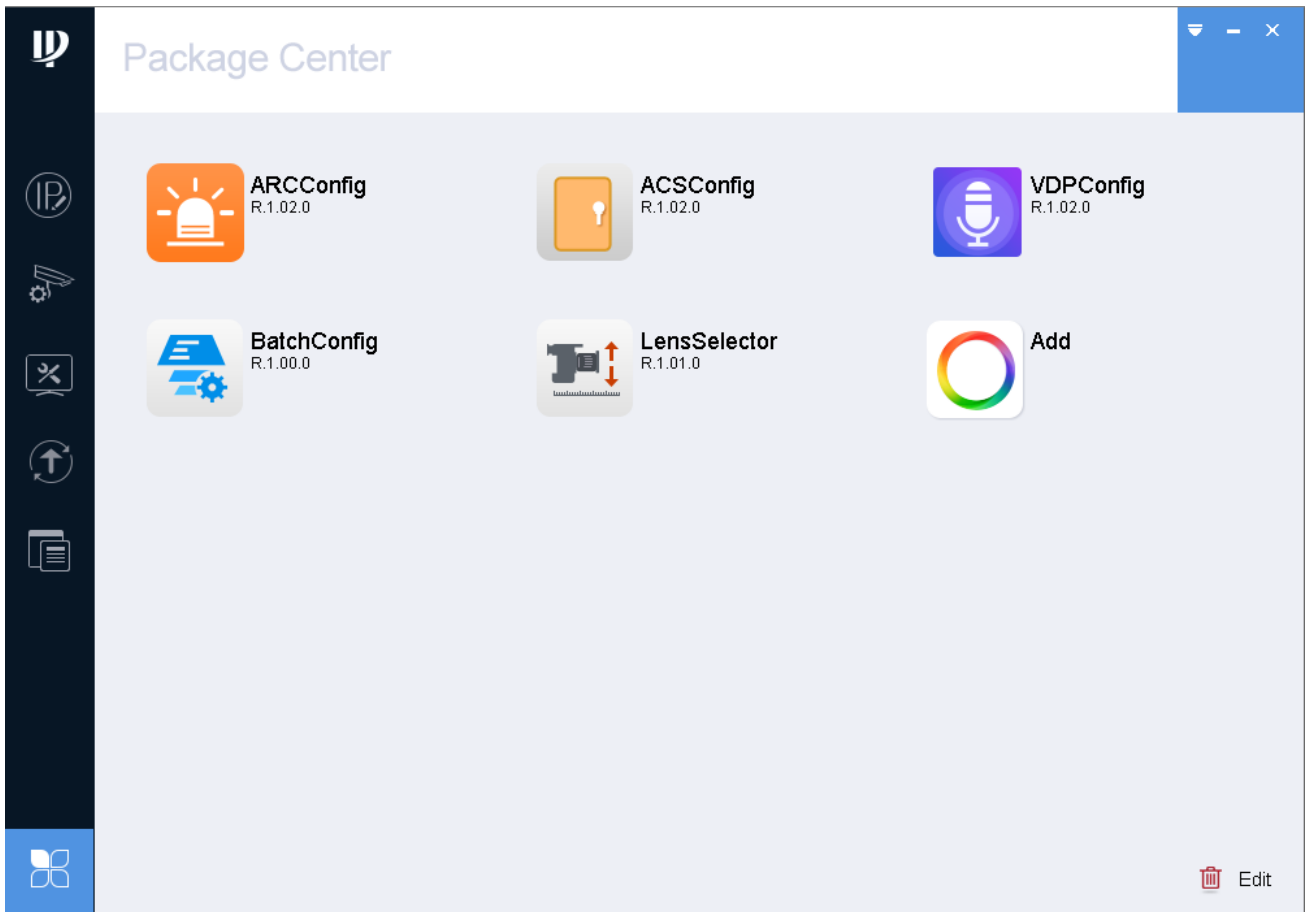



Figure 3-35

Step 2. Click  Edit. See Figure 3-36.

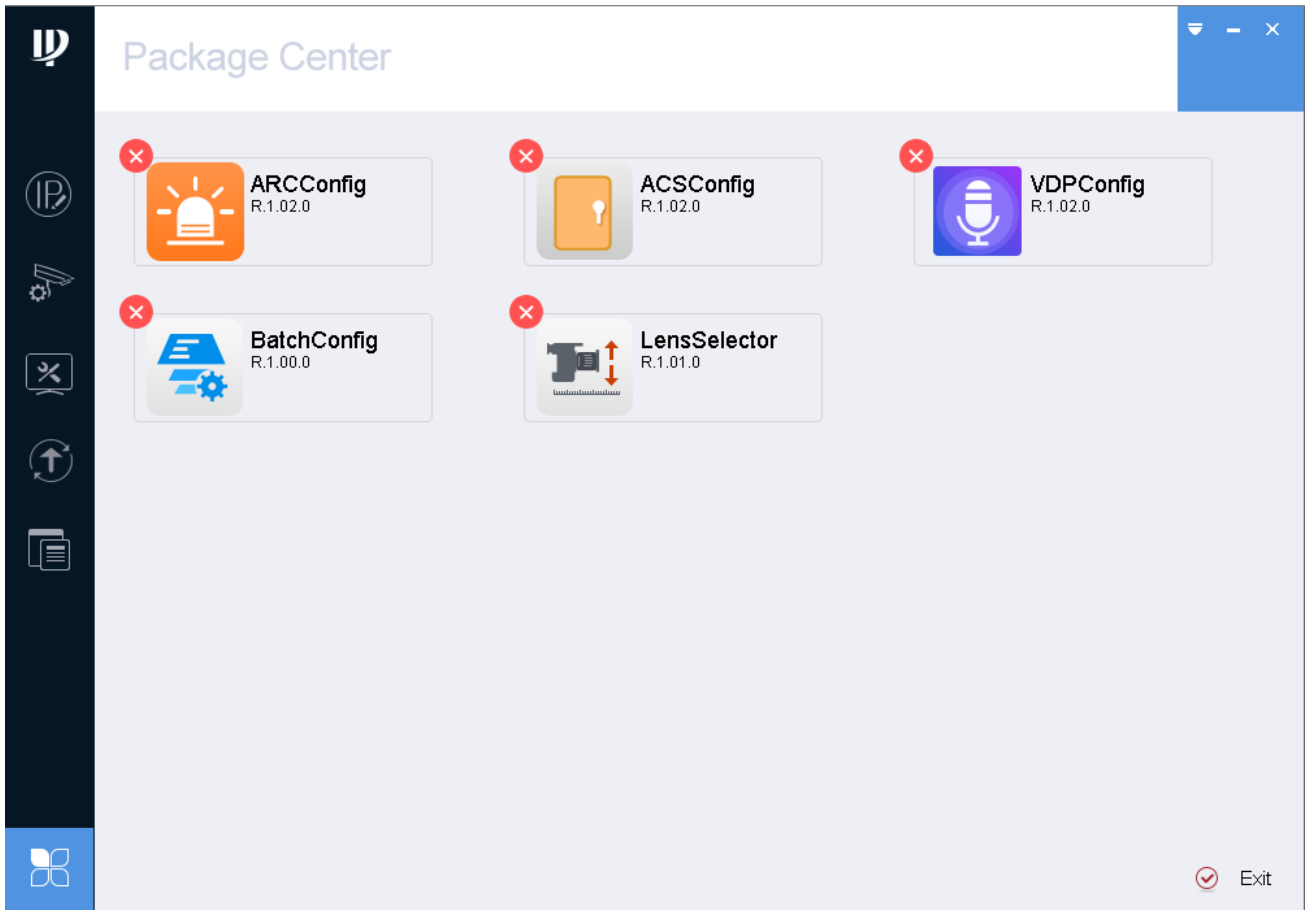



Figure 3-36

- Step 3. Click . System asks whether you want to remove this tool selected.
- Step 4. Click OK.
- Step 5. Click Exit.

**Note:**

- **This manual is for reference only. Slight difference may be found in the user interface.**
- **All the designs and software here are subject to change without prior written notice.**
- **All trademarks and registered trademarks are the properties of their respective owners.**
- **If there is any uncertainty or controversy, please refer to the final explanation of us.**
- **Please visit our website or contact your local service engineer for more information.**